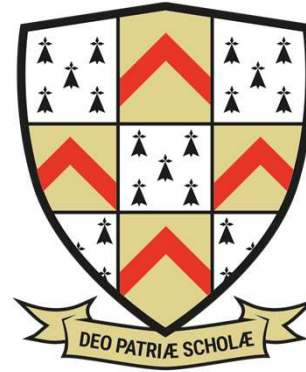




Ready, Respect, Strive



KING EDWARD VI
SCHOOL LICHFIELD

Uniform Expectations





Uniform Expectations

- School uniform promotes equality as it makes us all feel part of the same community regardless of any barriers we may face.
- School uniform teaches students to dress smartly and take pride in their appearance, which in turn will lead to high levels of achievement and positive wellbeing.
- Parents/Carers sign a home/school agreement which ensure that students wear the correct uniform.
- Our Code of Conduct has a strong emphasis on ensuring students always wear the correct and smart uniform.



- Attend school every day, where possible.
- Always wear the correct and smart uniform.
- Be on time to school and all lessons.
- Mobile phones must be switched off between 8.50am and 3.15pm and not seen or heard.
- Have correct equipment ready.



Correct Uniform

- Black blazer (sleeves rolled down) with a school badge plus an optional plain black **V-neck knitted jumper** (with or without school badge)
- King Edward VI School Skirt with logo **or** Plain black tailored trousers (without zips/writing/studs and not chinos, jeans or jeans style)
- White shirt winter / blue polo optional in the summer term
- Clip on school tie – if wearing white shirt
- Plain black, white, grey ankle socks **or** Plain black or neutral tights
- All uniform must be labelled – Name/Form





Shoes

- Plain black LEATHER shoes are the **only** shoes permitted for school.
- Black Nike Air Force footwear is acceptable– but please remove the metal silver tag.
- There should be **no** students wearing sports trainers or canvas shoes, mesh material or shoes with obvious logos/emblems.
- Shoes with high heels or boots are **not** permitted.
- No Hi-tops allowed.



Ready, Respect, Strive

Blazers and Jumpers

- **All** students must wear the school blazer. Students may wear both the blazer, and the jumper should they choose to do so, but they are **not** allowed to just wear a jumper or a coat instead of their blazer.
- Blazer/jumper sleeves **must not** be rolled up.
- Shirts should remain tucked in at all times, the **only** exception to this is during break/lunch if you are playing football on the field. However, this must be tucked in when you've finished playing.





Skirts and Trousers

- Skirts **must** always be worn at an appropriate length, **no more than 5cm** above the knee, and not rolled up at the top.
- Skirts must have the school logo on.
- Skirts with the split sewn up at the back are also **not** permitted.
- The school skirt must be purchased from one of our uniform providers with the logo on. Other black skirts which are similar with a logo sewn on **will not be permitted**.
- School trousers **must not** be skintight and should be either loose or tailored.
- Trousers **do not** have to have the school logo on.
- Skinny jeans, leggings or trousers made of a stretchy fabric **are not** acceptable.





Coats and Caps

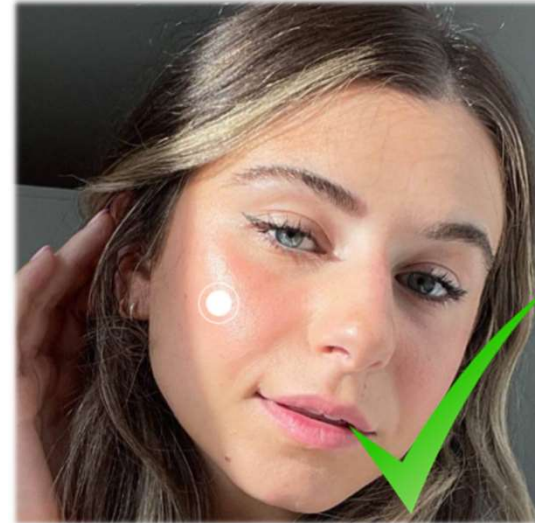
- A plain, dark outdoor coat may be worn over the blazer when the weather is poor. Camouflage-style combat clothing, pullover 'hoodies', leather/faux leather and denim jackets **are not** permitted.
- Coats **must not** be worn in lessons. Coats must not be worn instead of blazers or on top of blazers.
- Caps **must not** be worn in school unless there is a medical exemption*.

*Any exemptions must be authorised by a member of SLT



Make-up and Hair

- Excessive make-up is **not** permitted for school. If a student wishes to wear make-up it must be subtle.
- False eye lashes should be subtle and natural looking. If you are unsure, please check with a member of staff.
- False nails are also **not** permitted in school due to health and safety.
- Extreme hair styles are **not** permitted – this includes hair dyed an unnatural colour, or patterns shaved into the hair.





Jewellery

- Jewellery is restricted in school due to health & safety issues. Students may wear a watch. If the watch is a smart watch – students should not be checking this for messages and it should be disconnected from your mobile.
- A small ring and a small pair of earrings(stud) in each ear are also permitted. A necklace can also be worn but must not be visible and one bracelet may be worn. **Multiple necklaces, earrings and also bracelets are not permitted.** All jewellery must be removed for PE.
- Other forms of piercing (including but not limited to: nose/eyebrow/tongue piercings) are not allowed and students will be asked to remove them or wear a plaster over the piercing until it has healed.