

Year 7 Induction

Supporting Student Progress

Thursday 21st September 2023

Mrs Forster (Deputy Headteacher)



First Impressions



Equipment

- Pencil, ruler, rubber, glue, pens, highlighters
- PE kit
- Note book
- Water bottle
- Headphones for music and language lessons
- Name everything 😊



Frequency of Lessons

	Mon1	Tue1	Wed1	Thu1	Fri1
1	Art SDW 34	Design CMS	French JXB 51	Geography KLR S3	German EKL 24
2	Music EJB B2	Design CMS	Science DOH H6	English ALB 2	Science DOH H6
3	Tutor Peri LET Q6	Mathematic KEW Q5	Music EJB B2	Design CSC 39	Physical E SLB
4	Religious PAG ROOM	Physical E SLB	Geography KLR S3	History LMC M4	English GEM 21
5	Drama CCU Drama	English GEM 21	Mathematic LET Q6	Science VVM H2	French JXB 51

	Mon2	Tue2	Wed2	Thu2	Fri2
1	Design CSC 39	Physical E SLB	Mathematic LET Q6	German EKL 24	Art SDW 34
2	Design CSC 39	French JXB 51	Geography KLR S3	Music EJB B2	Mathematic LET Q6
3	Mathematic LET Q6	English GEM 21	Drama CCU Drama	Mathematic LET Q6	Science VVM H2
4	Religious PAG ROOM	Science DOH H6	Science DOH H6	English GEM 21	German EKL 24
5	Physical E SLB	History LMC M4	Art SDW 34	History LMC M4	English ALB 2



The Context

- Raising of the 'national standard' at GCSE.
- New grading system at GCSE.
- KS3 to be the training ground for KS4.
- Covid and the 'catch-up' curriculum.



Old grades	New grades
A*	9
A	8
B	7
C	6
	5 STRONG PASS
D	4 STANDARD PASS
	3
E	2
F	1
G	1
U	U



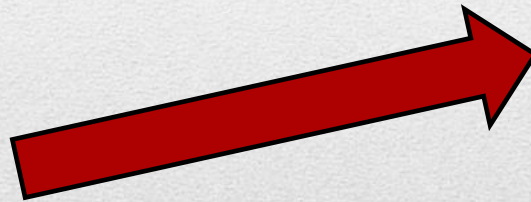
Creating A 'Can Do' Culture



The 'Expected' Standard



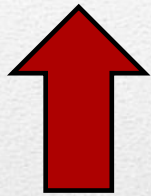
**THE EXPECTED
STANDARD OF
WORK (Y7)**



**THE EXPECTED
STANDARD OF
WORK (Y11)**



Exceptional – those students who have mastered the skills and knowledge of the course.



Advanced – those students working beyond the expected standard but haven't quite mastered all of the skills and knowledge.



Secure – those students who have reached the standard that we expect for Y7 students.



Foundation – those students working towards the expected standard.



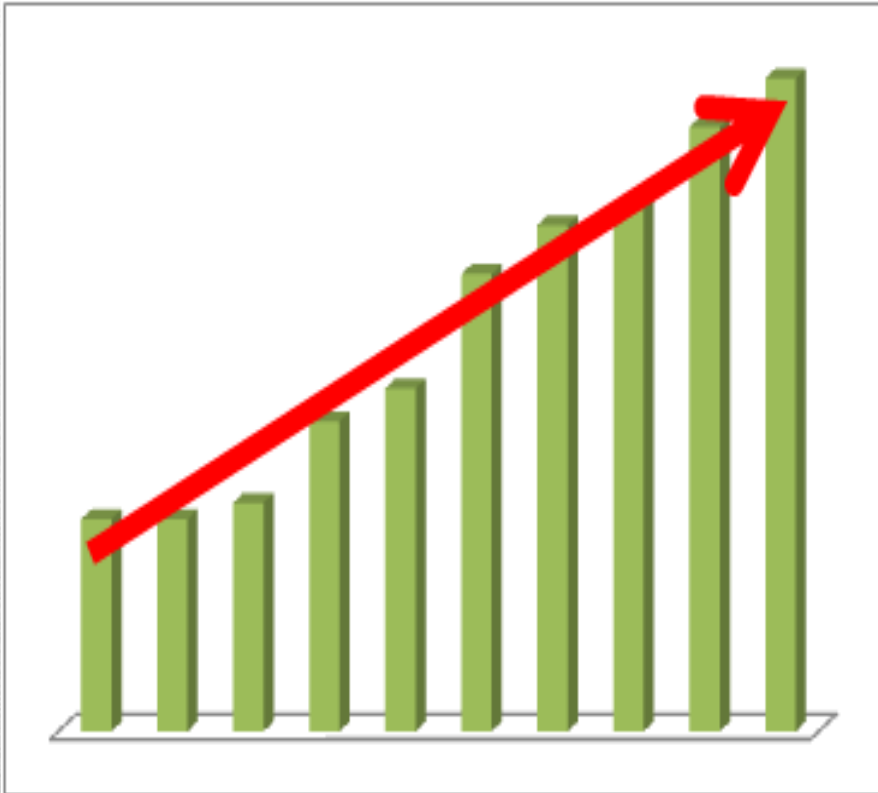
Performance	GCSE
Exceptional	8 - 9
Advanced	6 - 7
Secure	4 - 5
Foundation	1 - 2 - 3



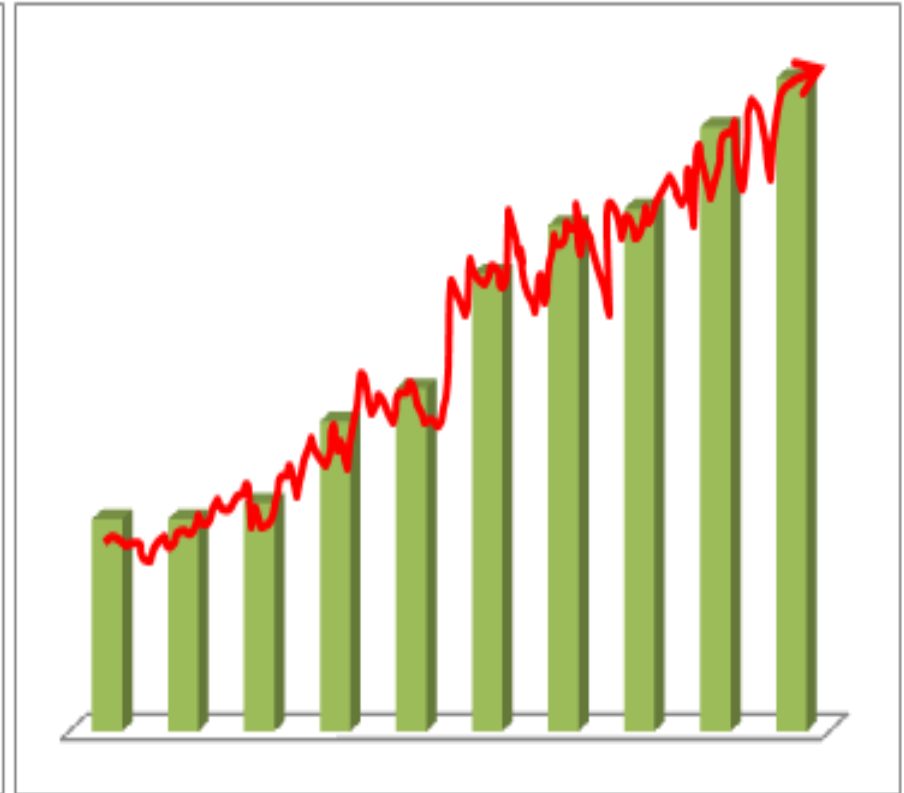
Tracking Progress

	Exceptional		Advanced		Secure		Foundation
Y7Creating	I can follow the ideas and instruction of others but find it difficult to give your own ideas and/or find it difficult to focus.	✓	I can work in a group and listen to and co-operate others, you can offer some ideas and stay focused.	✓	I work actively in a group and you listen to others' ideas and you can make decisions with your group. You are consistently focused.		I work excellently in a group and sometimes take the lead in making decisions. I am always focused.
	I can respond to stimulus material but find it hard to develop your ideas.	✓	I can plan and create a piece of drama from stimulus material.		I can plan, create and develop a structures piece of drama from stimulus material.		I can plan, create and develop a structured piece of drama from stimulus material in an imaginative way.
	I know how dramatic structures can be used within a piece of Drama.		I can use dramatic structures as directed by the teacher.		I can use dramatic structures as directed by the teacher and are beginning to suggest where they could be used appropriately within a piece of Drama		I can use dramatic structures as directed by the teacher and are beginning to suggest where they could be used appropriately within a piece of Drama and discuss their effectiveness.
Y7Performing	I know how different tones and expressions can be used for characters but struggle to use them	✓	I use different tones and expressions as directed by others.	✓	I am beginning to experiment with the use of voice to create different tones and expressions in your performances.		I experiment with the use of voice to create different tones and expressions with some confidence.
	I understand the importance of staying in role but sometimes struggle to do so	✓	I am occasionally able to stay in role throughout a performance		I am usually able to stay in role throughout a performance		I am able to stay in role throughout a performance
	I know there is an audience but do not respond to their needs.		I can communicate with others on stage and you are aware of the audience.		I can communicate with others on stage and you make some decisions about how to use space and how to stage your performance for the audience.		I can communicate effectively with others on stage and you make considered decisions about how to use space and how to stage your performance for the audience.





The trendline we like to imagine...



... and something like reality

How We Feedback To Students

WWW – What Went Well.....

EBI – Even Better If.....

Current Progress.....

E.g. Exceptional/Advanced/Secure/Foundation



How We Feedback On Progress To Parents

Parents' Evening: 28th & 29th February (on-line)

Report: week beginning 1st July

Reports are published on 'GO 4 Schools'
(with a notification)



**Have a regular
look at their
exercise books**

① **money in water** = Won't burn because the boiling point for water is high at 100° ✓

② **Money in alcohol** = It will burn because alcohol always burns - did the reactive functional -OH group.

③ **money in a mix of water and alcohol** = The water evaporates the alcohol, leaving the water which does not burn as it has such a high boiling point = The alcohol burns and the water doesn't. (water acts like a shield) ✓ lovely description

✓ great self marking inside

Date: Wednesday 2nd October

I now understand the formulae for alcohols and how they're drawn. I also understand ethanol production.

To improve:
To revise the diagrams for alcohols so I know them off by heart.

lovely reflection





4 SCHOOLS





14th September 2022

Dear Parents and Carers,

Following previous communication, parents and carers of students in Year 7 should now be able to access our GO 4 Schools system. It is important that all parents and carers have access to GO 4 Schools to see up to date information about achievement and behaviour events. Log in instructions are detailed below.

What information will I be able to see?

Initially you will be able to access real time information about your child's:

- Timetable - a summary of the timetable for that particular day, plus a link to view their full timetable
- Attendance data – shown from the start of the academic year up until the previous day and breaking down authorised and unauthorised absences as per the national attendance coding structure. Further information about the coding structure can be found in the Attendance Policy on the Policies and Documents page of the school website under the Information tab
- Behaviour – a summary and further breakdown of all behaviour events, positive and negative since the start of the school year

The GO 4 Schools notification function will be used to communicate detentions and weekly behaviour updates.

You will also be able to use GO 4 Schools to access attainment information including marks and target grades for subjects and to access reports. Further communication will be sent out when we are able to make this information available.

You will only be able to see information about your own child.

How do I access this information?

GO 4 schools can be accessed via a web browser (e.g. Microsoft Edge, Chrome, Safari etc.) or via a free to access app.

Please see information below for login instructions.

Students will be shown how to access GO 4 Schools during I.C.T. lesson time; they will be using their school email address to do this.

Yours sincerely,

Mrs J Critchley
Data Manager

You should have received a letter about GO 4 Schools

A copy can be found on the 'letters page' of the website under July 2023.

It is also available on our GO 4 Schools web page which can be accessed from the GO logo on the front page.



What information will I be able to see?

Initially you will be able to access real time information about your child's:

- Timetable - a summary of the timetable for that particular day, plus a link to view their full timetable
- Attendance data – shown from the start of the academic year up until the previous day and breaking down authorised and unauthorised absences as per the national attendance coding structure. Further information about the coding structure can be found in the Attendance Policy on the Policies and Documents page of the school website under the Information tab
- Behaviour – a summary and further breakdown of all behaviour events, positive and negative since the start of the school year

The GO 4 Schools notification function will be used to communicate detentions and weekly behaviour updates.

You will also be able to use GO 4 Schools to access attainment information including marks and target grades for subjects and to access reports. Further communication will be sent out when we are able to make this information available.

You will only be able to see information about your own child.



Calculating Potential

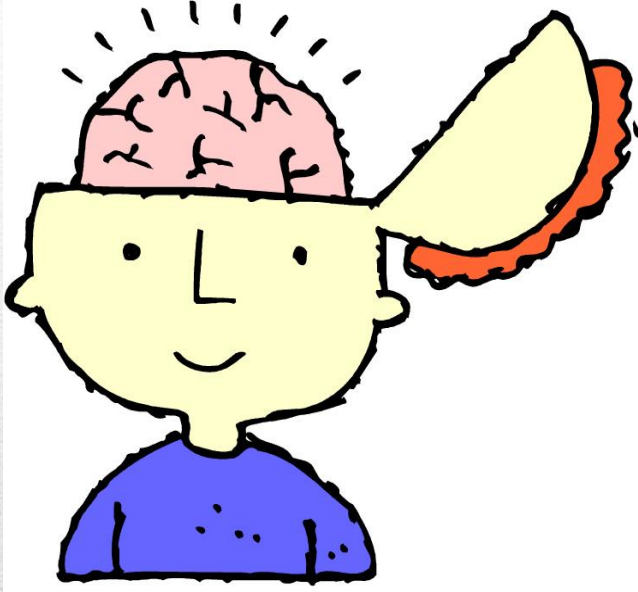


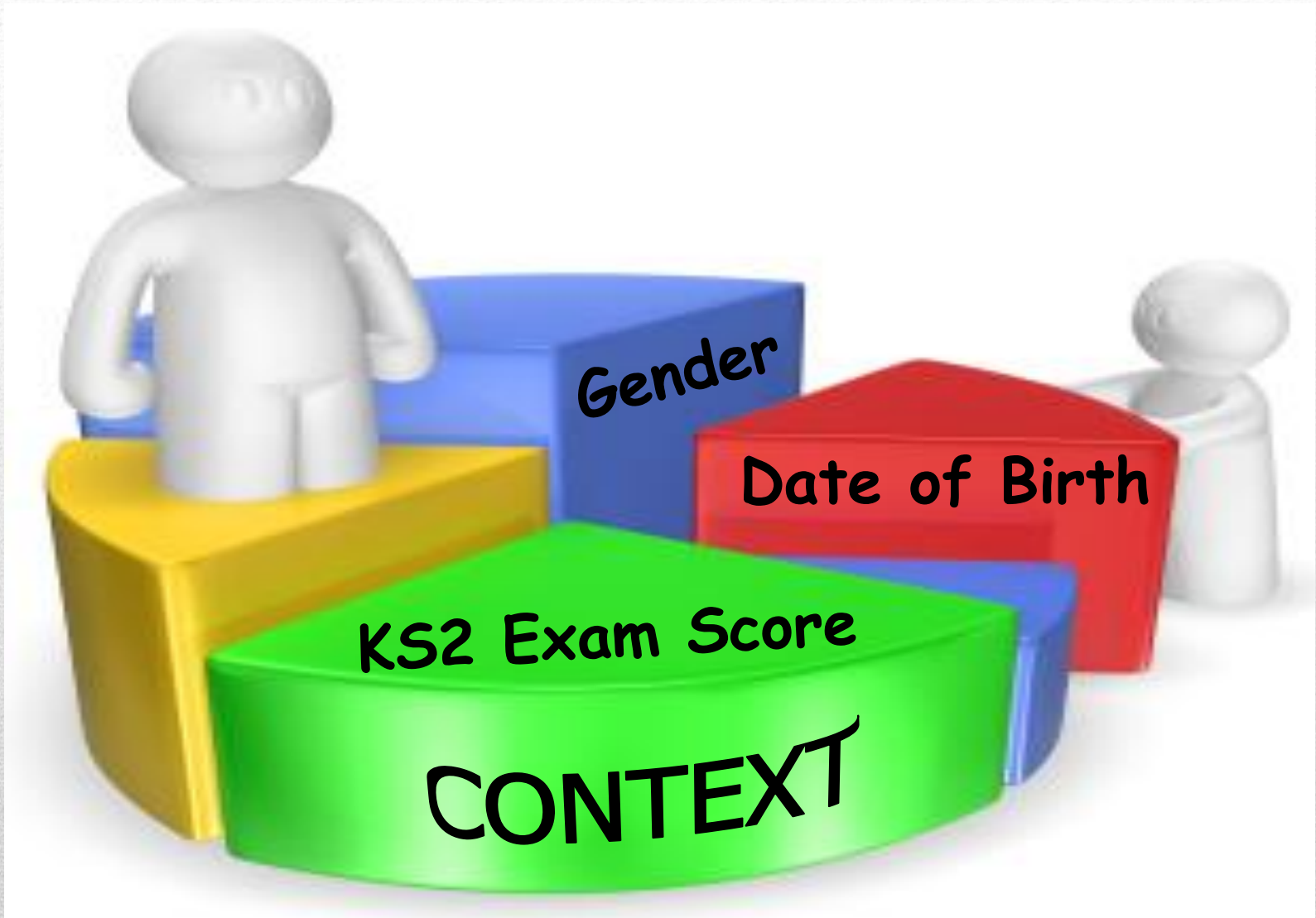
Y6 Teacher Assessments

KS2 Test Results



Estimation Systems



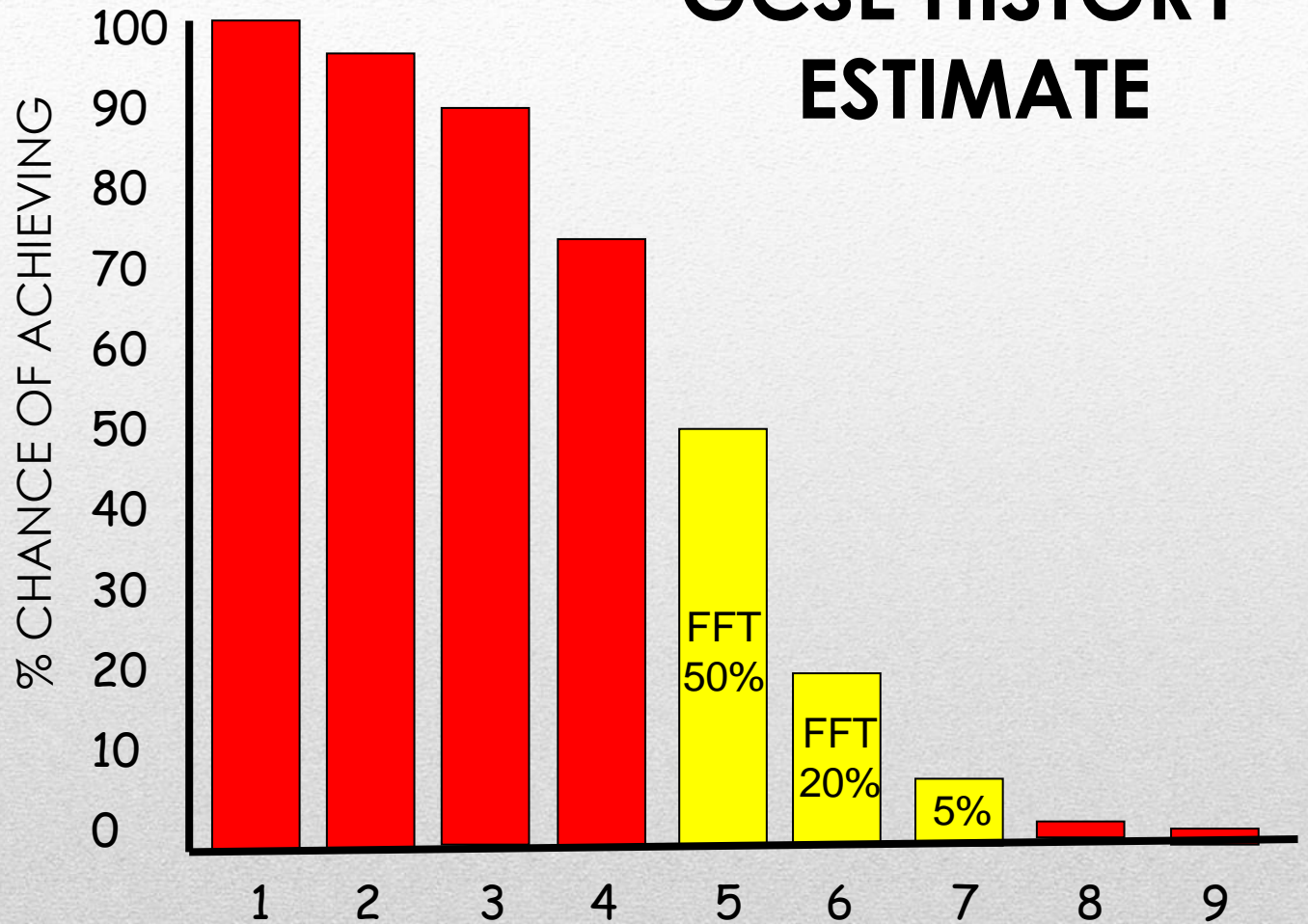




16/2/2003



**KS2 Score:
English &
Maths
average point
score: 110**

GCSE HISTORY ESTIMATE

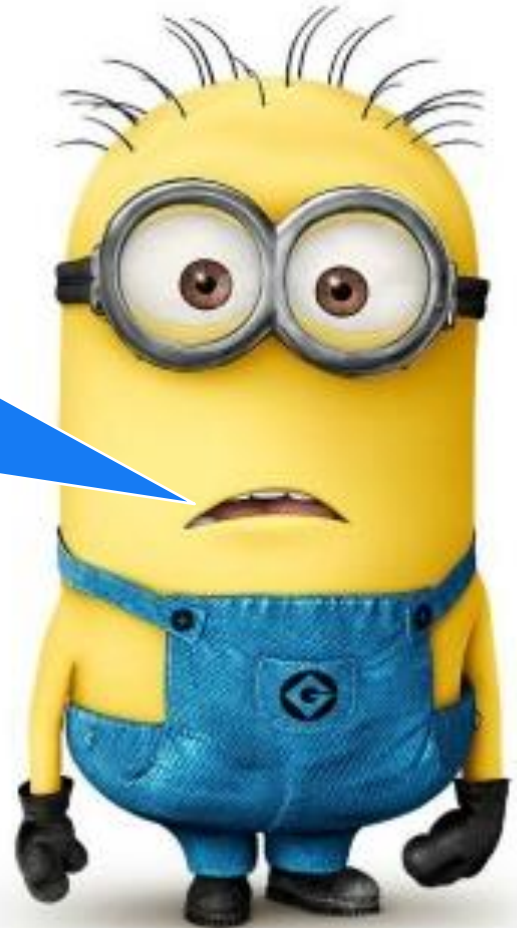


EXPECTED GCSE GRADE RANGE



 KS2 Score	120	EXCEPTIONAL		9	9	9
	115			8	8	8
	110	ADVANCED		7	7	7
	105			6	6	6
	100	SECURE		5	5	5
	95			4	4	4
	90	FOUNDATION		3	3	3
	85			2	2	2
	80			1	1	1
Y6		Y7	Y8	Y9	Y10	Y11

I'M NOT A
NUMBER!



Homework

Subject specific
guidelines
available via the
school's website



Geography Homework Guidelines

Key Stage 3

Homework set	Method of assessment	Approximate time to complete task	Timescale for completion	Frequency of task
Model making	Teacher/peers to mark	3-4 hours	3-4 weeks.	Once per year
Completion of class work	Brief check	20 minutes	Next lesson	Occasionally
Revision	GCSE practise questions	1 hour	Usually 1 week	Half termly in year 9
Research	Included in assessed pieces	1 hour	Usually 1 week	Termly (dependent on type of assessment)
Preparation for verbal assessments	Presentation by student. Assessed by teacher/peers.	45 minutes	1 week	Occasionally
Written assessments	Teacher assessed	30 minutes	1-2 weeks	Half termly in year 7/8

satchel:
one



My calendar

School calendar

7

x

Select a type

Select a subject

Select a teacher

Prev

Next

Today

Sep 4th - 10th, 2017



Homework Spelling Test Quiz Differentiated Homework Class Test

Monday 4th Sep	Tuesday 5th Sep	Wednesday 6th Sep	Thursday 7th Sep	Friday 8th Sep
		<p>7C2/Fre French Mrs. K. Baker ³</p>	<p>7A1/Re Religious Studies Mrs. H. Weaver ⁷</p>	<p>7G1/Re Religious Studies Mrs. A. Giles ⁵</p>
			<p>7C1/Re Religious Studies Mrs. A. Giles ⁵</p>	<p>7G2/Re Religious Studies Mrs. A. Giles ⁴</p>
			<p>7D1/Hy History Miss L. Comer ⁶</p>	<p>7G2/Fre French Mrs. N. Timores ⁵</p>
			<p>7D2/Hy History Miss L. Comer ⁷</p>	<p>7C2/Hy History Miss L. Comer ⁶</p>
			<p>7C1/Gy Geography Miss R. Thomas ⁷</p>	<p>7C2/Gma German Mrs. E. Loverock ⁵</p>
			<p>7C2/Gy Geography Miss R. Thomas ⁷</p>	<p>7D1/Fre French Mrs. J. Briden ⁴</p>
				<p>7D2/Gma French Mrs. J. Briden ⁵</p>



Library Resource Centre

Open 8.30am – 4.15pm.



- After school **homework club** every night staffed by a Learning Support Assistant
- Regular activities to promote reading including Book Club Wednesday Lunchtimes
- Supporting reading for enjoyment and developing students information literacy skills
- A programme of research sessions embedded into the curriculum



Coming up....

- Open Evening – Wednesday 27th September
(early closure)
- Individual Student Photographs – Thursday 5th October
- Carol Service – Tuesday 28th November
- PTA Christmas Fair – Thursday 30th November



- Form tutor
- Subject teacher
- Head of Department
- Mr Whitehurst – Achievement Leader
- Mrs Ridgway – Achievement Co-ordinator
- Mrs Brookhouse – Pastoral Support Assistant
- Mrs Tooth – Inclusion Manager
- office@keslichfield.org.uk
- 01543 255714

Contact us



Further Information

- A copy of this evening's slides can be found on the school website.
- More detailed information on each subject can also be found on the school website.

