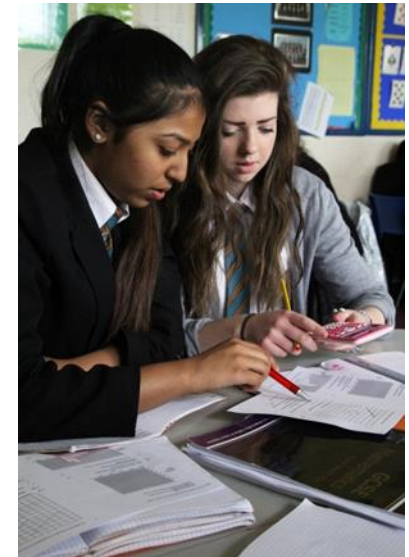


Consultation: School Status

Parents' Meeting

Wednesday 19th November 2014



What is an Academy?

A school which is:

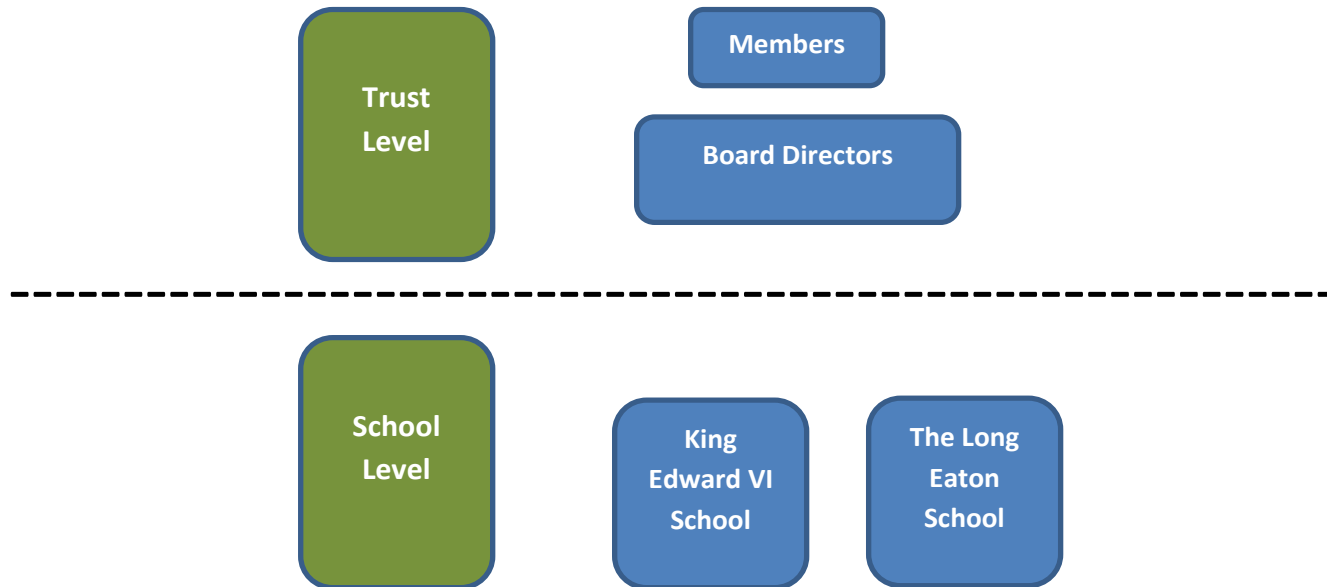
- independent of the Local Authority (Staffordshire County Council)
- funded directly by the government
- able to make changes to the national curriculum
- able set school day/holiday dates
- responsible for employing its own staff (at the moment all staff are employed by Staffordshire LA)
- given funds direct which the LA currently control
- 1870 of around 3200 secondary schools are now Academies

“Sponsor” and “Converter” Academies

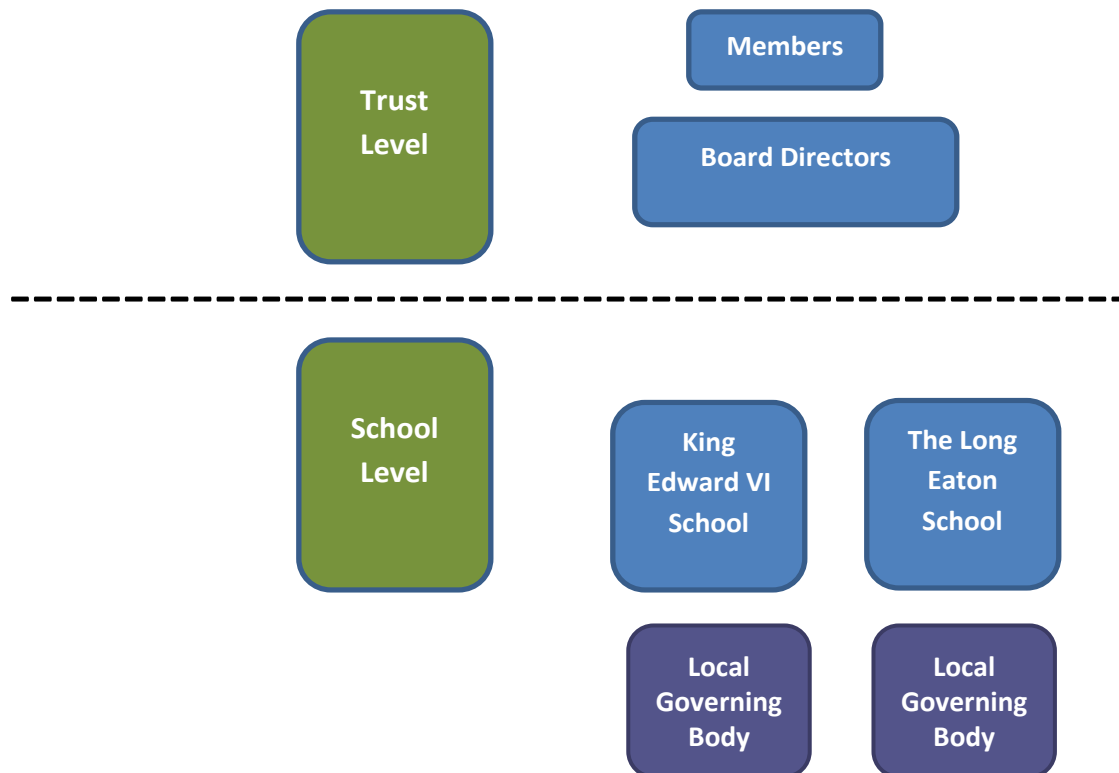
- Sponsor academies – another organisation takes over the school and runs it:
 - E.g. Landau Forte now run the Sixth Form Academy and the school which was Woodhouse in Tamworth
- Converter academies – the school simply converts (changes) to an academy: no other organisation takes over:
 - E.g. Chasetown High School is now Erasmus Darwin Academy; Chadsmead Primary School is now Chadsmead Academy; John Taylor High School is now an academy

What about us?

- Governors are considering changing our status to an academy and setting up a Multi-Academy Trust
- Two (or more) schools under one Trust



How would it work?



Equal partnership between two schools with representation at Trust level

Two headteachers

Two governing bodies

Would school structures change?

- No Executive Headteacher
- Accounting Officer required
- Two local governing bodies
- Directors of the Trust would be drawn from governing bodies of both schools, the two headteachers plus any additional directors appointed by the Trust
- Bound by Articles of Association and a Scheme of Delegation

What would stay the same?

We would still:

- be an 11-18 school
- have students from our local primary schools
- be a comprehensive school – no test or exam to get in
- keep our name, uniform and logo and ethos
- keep our holidays the same as other local schools
- follow the same subjects that we do now
- have the staff we have now

Local Authority responsibilities

- Home to school transport
- Co-ordination of admissions
- Education psychology, SEN assessment, statementing and support services
- Monitoring of SEN, parent partnerships
- Prosecution of parents for non-attendance
- Provision of education for pupils no longer registered in an academy

How will our school be different?

- On a day-to-day basis there would be little difference that students would notice
- We would have more funds but we would have to buy services that the LA gives us at the moment
- Some subject areas might choose to change some of the things they teach
- The work of the governors would be different
- The work for some of our staff would be different as we take on more responsibilities. There would be opportunities for staff to work collaboratively

The Long Eaton School

Where? Why?

- Long Eaton is in Derbyshire about 33 miles away
- An 11-18 school, already an academy, of a similar size
- Similar ethos and approach
- Partnership between January and July 2014 during a period of change at King Edward VI School
- Links across a number of departments and visits between schools by a range of staff
- Both schools looking for possible partner
- Both schools wanting to work collaboratively but retain their independence and identity

Why change?

- We have an opportunity to build on a positive link and set the ethos for the partnership
- The government (all three main political parties) are keen to see schools become academies
- We would have control over our own future – there is a risk that we might be told to join a Multi-Academy Trust in the future
- We will ensure that we get the best value for money to direct resources to the classroom
- We will be able to bid for further funding to improve our buildings & facilities

When would it change?

- There is no fixed timeline
- On 11th December the governors will decide whether to continue the process with a more detailed investigation
They will consider:
 - Best interests of our students
 - Best interests of our staff
 - Best interests of the wider community
- Both schools would then need substantial further work to be undertaken to ensure that the terms of the partnership and the financial & legal positions were clear

How can I find out more information?

- General information about academy status can be found on the Department for Education's website:
- <https://www.gov.uk/become-an-academy-information-for-schools>
- You could also just Google "academy status in schools"

Questions so far

- What procedures and available reports will be put in place to replace the LA's procedures and reports that will demonstrate clearly detailed independent scrutiny and transparency on how finances are being spent?

Regulatory Framework – Company

- Academy trust is a limited company
- Prepare annual accounts (31 August)
- Submit to Companies House within 9 months (31 May)
- Comply with Companies Act and Charities SORP
- Maximum accounting period is 18 months
- Must be audited by external auditors
- Annual Return to Companies House

SORP = Statement of Recognised Practice

Questions so far

- What possible impact will the parents' views during consultation have upon the consultation process?

Questions so far

- Would there be a possibility of extending the MAT to other strategic schools such as feeder schools to KEVI, since all schools appear to be heading for a more independent route?

Questions so far

- When you become a MAT you take over the financial obligations which are normally handled by County such as maternity pay and pensions. Is the school in full possession of all the facts regarding outstanding pension commitments?

I am aware of other schools who have gone down this route and ended up with vast pension debts which have only been made apparent after the change of status to MAT when it is too late to do anything about it.

Considerations include:

- Maternity pay
- Union Duties
- Maintenance Contracts
- Termination of employment costs
- School Admissions & Appeals
- Assess eligibility for free school meals
- School Improvement
- Licences & subscriptions
- Data Storage
- Business Continuity Plan

How can I share my views or ask questions?

- Via the email address:
academyconsultation@kingedwardvlichfield.staffs.sch.uk
- In writing
- Talk to governors
- Talk to your son/daughter