



KING EDWARD VI
SCHOOL LICHFIELD

SIXTH FORM INFORMATION BOOKLET 2023 - 2024

Welcome

Thank you for considering King Edward VI Lichfield Sixth Form. We are pleased to receive applications from both those students who are currently at our school and from those students who are studying for GCSEs elsewhere.

Why Study with Us?

Our students achieve excellent results. From their academic success, students progress onto various courses at university as well as higher level apprenticeships and employment. All our Sixth Form teachers are subject specialists and have developed a great deal of expertise in their area. Consequently, we receive highly positive feedback every year about the level of support that our students can access from their teachers.

- ◆ The pass rates are amongst the best in Staffordshire
- ◆ The overall pass rate in 2023 was over 98%
- ◆ 47% of all grades were at A* - B (or equivalent)
- ◆ Students in the Sixth Form make good progress in academic courses and achieve grades which enable them to progress to university, apprenticeships or employment. (Ofsted October 2017)
- ◆ In 2023 70% of Year 13 leavers attained a university place, with 80% of these being their first choice

By choosing King Edward VI Sixth Form you will be opting to study in an environment where staff care about your personal development and your academic progress. We are committed to each individual student, so we put great stress on guidance, care and support. Each student will have daily access to a Form Tutor and Sixth Form Leadership Team comprising the Head of Sixth Form, Achievement Leader Year 12 and Year 13 and Assistant Achievement Leader Year 12 and Year 13. We work hard with you to make sure that decisions made are informed and wise.

Along with our academic success, we are proud to be a Sixth Form which has a strong sense of community; a place where everybody is valued, supported and encouraged to contribute to their community. Not only do our Sixth Form students act as role models to younger students within the school, but they also assist in organising whole school events in which students of all ages participate. Many students also take on additional responsibility by acting as Prefects, House Prefects and Mentors. Our students are excellent ambassadors for the School and Sixth Form in the local community and we are very proud of them.

We look forward to welcoming you to King Edward VI Sixth form where you will embark on the next stage of your education.

D J Butler
Assistant Headteacher
Head of Sixth Form



KING EDWARD VI SCHOOL, LICHFIELD

SIXTH FORM

OUR AIMS

Work Hard, Achieve More

- ◆ To provide the very highest quality of education and guidance to enable students to develop their academic and social abilities to the full.
- ◆ To enable students to reach their potential in developing the subject knowledge, skills and understanding required to succeed in public examinations.
- ◆ To support students' personal and social development in order that they may be confident, free-thinking and independent citizens.
- ◆ To sustain personal development through wider opportunities where students experience the breadth and balance of an enriching curriculum.
- ◆ To provide continuity and progression in academic challenges and pastoral care.

Our Values



Ready *Respect* *Strive*



CONTENTS

SIXTH FORM AIMS	2
CONTENTS	3
WHAT OUR STUDENTS SAY ABOUT THE SIXTH FORM	4
WHAT KING EDWARD VI LICHFIELD SIXTH FORM OFFERS YOU	6
ENTRY REQUIREMENTS	16
CHOOSING YOUR OPTIONS	18
APPLICATION PROCESS	20
SUBJECTS OFFERED	21
COURSE DESCRIPTIONS	22
PERSONAL DEVELOPMENT PROGRAMME	56
APPENDIX	57

- ◆ Advice and Guidance
- ◆ A Level Results 2023
- ◆ Destination of School Leavers 2023

An electronic copy of this Prospectus is available at www.keslichfield.org.uk

The Application Form can be accessed at <https://apps.switchlp.com/6thFormApp/>



WHAT OUR STUDENTS SAY ABOUT THE SIXTH FORM

Nothing says it better that we have done our job properly than the feedback of happy, successful students



"I think King Edward VI Sixth Form is a great opportunity to further your education. The teachers are really dedicated to our learning and the facilities enable us to develop a wide variety of skills".

"Our Sixth Form is a friendly and welcoming environment".

"The Sixth Form team work their best to support every student in an enthusiastic and dedicated way"

"The teachers make lessons enjoyable and go out of their way to make sure we do the best we can".

"Tutors really help us with our UCAS applications".

"The Sixth Form facilities are top notch and the teachers teach on our level".

"Many of my teachers have gone out of their way to organise resit and revision sessions to ensure I obtain the best grades".

Very good support from your teachers in all aspects of education.

"The Sixth Form at King Edward VI is the easiest place to settle in to. As an external student I would recommend it".

"One of the greatest aspects of the Sixth Form is all the extra opportunities there are. I really enjoyed getting involved in the house events because apart from giving you so much more responsibility, I get to know a whole new group of people".

WHY STUDY WITH US?

Talks from the universities of Oxford and Cambridge inspire and encourage students. Students all visit the UCAS Higher Education Conference and a Russell Group university to explore their post-18 options.

A huge range of enrichment activities are on offer including volunteering, reading groups, sports teams, Debating Society, Maths Challenge, Young Enterprise and many more.

100% A-A* achieved in Extended Project Qualification over a number of years.

Excellent support from an experienced and highly skilled set of personal tutors in completing their post-18 applications.

Independent careers advice available for every student to explore their post-18 options.

Become part of the King Edward VI community – whether getting involved in House activities or supporting charity events, everyone plays a part in our school.

Many opportunities to develop employability skills through activities such as the Ashmole Society, House activities and as a Prefect.



WHAT KING EDWARD VI SIXTH FORM OFFERS YOU

As a Sixth Form we are committed to supporting you to realise your academic potential, whilst developing the personal and social skills which will equip you for life beyond education. As well as offering a wide range of courses, we offer an extensive programme of enrichment activities to develop well rounded individuals. We also ensure you are given every support in planning your chosen route after Sixth Form education, whether it is to university, a higher level apprenticeship or full-time employment.

Each student has an individual programme of study, which is tailored to their interest and ability. Students have daily access to a form tutor and sixth form leadership team comprising the Head of Sixth Form, Achievement Leader Year 12 and Year 13 and Assistant Achievement Leader Year 12 and Year 13. In addition, we have our own Post 16 Administration Officer who provides guidance and support for students on a variety of issues including university applications.

Every student has daily access to a tutor for consultation; advice and assistance at every stage of development; and the opportunity to make an appointment with the school's careers advisor.

Sixth Form Leadership Team:

Assistant Headteacher and Head of Sixth Form	:	Mr D Butler
Achievement Leader Year 12 and Year 13	:	Miss J Williamson
Assistant Achievement Leader Year 12 and Year 13	:	Mr A Haigh
Post 16 Administration Officer	:	Mrs B Gillson
Sixth Form Learning Mentor	:	Mrs L Duval

Facilities

The Sixth Form Centre provides an excellent opportunity for sixth form study and personal development, containing Sixth Form teaching rooms, a computer suite, sixth form offices, toilets and the common room.

The Sixth Form Common Room contains facilities for making drinks and easy chairs and tables to work at. The school catering service also provides a vending machine of sandwiches and snacks. A regular rota ensures the tidiness of the room and an atmosphere to be able to both study and relax is implemented during timetabled lessons. Students are also permitted to go off site during their study periods and break-times with permission from their parents/guardians, once agreed by the school.

Careers Advice

The Careers Library in the upstairs section of the Resource Centre provides reference books, pamphlets, prospectuses and other printed materials regarding higher education and employment opportunities. In addition, a Careers Officer visits the school by prior arrangement, to see students on an appointment basis. Other appointments may be arranged through the Careers Office. Guest speakers visit the School to address students on employment and higher education. Students will attend Open Days appropriate to their individual UCAS applications, and all will have the opportunity to attend the local Higher Education Convention in Year 12. There is no shortage of advice; students are urged to take advantage of the information offered.

Enrichment Activities

There are many opportunities for Sixth Form students to enhance and develop their personal and social skills through a variety of enrichment activities here at King Edward VI Sixth Form.

Pastoral Programme

Throughout the year, students attend regular assemblies and tutor periods. During this time with their tutor, students follow an extensive pastoral programme designed to support their learning and develop their social awareness. We also have a number of visiting speakers who give their personal experience of events, as well as promoting activities in which the Sixth Form can become involved.

Curriculum Enhancement Days

There are a number of days each academic year when the whole school is off timetable to take part in different activities. The Sixth Form complete a variety of activities including Health Education, Post 18 Options preparation and Life Skills. Students in the Sixth Form enjoy these different experiences as part of a rounded curriculum.

Work Experience and Volunteering

Many of our students organise work experience during Years 12 and 13. This may be career relevant, such as a placement in a hospital or can be giving something back to the community in general. A number of our students volunteer at Saxon Hill Community School.

Mentoring Younger Students

Sixth Form students have the opportunity to be mentors for younger students. The first year of secondary school is very important for the successful transition of students into Year 7. Sixth Form students are trained to be mentors to support students during this time and make their transition as smooth as possible.

Sixth Form Reading Group

The Sixth Form Reading Group regularly meets at Lichfield Library. Both Year 12 and Year 13 students read a book, usually chosen by the group and then discuss it together. Students have really enjoyed this opportunity to discuss favourites and discover new authors.

Debating Society

The Debating Society meets on a regular basis to discuss the issues of the day. The team competes in a number of competitions across the area including Debating Matters and the Michael Fabricant Public Speaking Competition. Previous teams have enjoyed great success, including winning individual speaker prizes and being selected for regional finals.



Young Enterprise

Students have the opportunity to run their own company. This involves developing a product idea, managing finances, team work and leadership. We have been highly successful in this venture with one of our team winning the National Innovator's Award from KPMG and many of our teams winning the area finals competition and going on to represent the Lichfield and Tamworth area at regional finals. In 2016 our Young Enterprise team made the National Finals at the Emirates Stadium. In 2020 our Young Enterprise team won the National Finals and represented the UK in the European finals in Portugal.

"We have learnt so much from the company programme, from time-management skills, inter-personal skills and teamwork skills which have all benefitted us greatly already. We are extremely grateful for all of the hard work Mr Turner has put into running the programme and supporting us in winning the completion and hope that it encourages more people to take part in Young Enterprise".



School Productions

The school has a proud history of excellent school productions and Sixth Form students play a large role in their success. Whether a budding actor or with no experience, there will be a role for you to take on in the play itself or the background preparations and running.

Senior Choir and Band

The Music department runs a huge variety of different ensembles and clubs throughout the school. Specifically, for Sixth Form, the senior choir and band practice and perform many numbers for school events. These groups make a much valued contribution to Dedication Day, the Spring Concert and school productions to name a few.

Sports Teams

Students in the Sixth Form can join one or more of a number of sports teams that are run by the PE department. These include football, rugby, hockey, basketball, cross country and many more.

There are also a number of subject specific opportunities to choose from. These include:

Film Club for Languages

History Club

Maths Challenge

Duke of Edinburgh

Mentoring

Roles of Responsibility

We are proud of the many positions of responsibility Sixth Form students hold. These roles hold a great deal of respect and responsibility, providing essential support to the smooth running of the School.

Ashmole Society

The Ashmole Society is the student committee of the Sixth Form and each tutor group nominates its own representative. The committee meets regularly and is the driving force behind events such as the Macmillan Coffee Morning, the Trolley Dash, Children in Need Fayre and Five for Five. We are proud to organise a number of charity events throughout the year to support others and raised over one thousand pounds for these charities last year: Macmillan Cancer Support, Children in Need, The Brain Tumour Research Charity and The Pink Ribbon Foundation.

The Sixth Form team are keen to take on board ideas and suggestions from Sixth Form students through the Ashmole Society. We also run a yearly student voice activity where students have an opportunity to express their views.

House Activities and House Prefects

King Edward VI School has four houses: Addison, Clinton, Darwin and Garrick. To win points and be crowned the Best House at the end of the year, students participate in a variety of House events. Sixth Form students are vital to running these events, getting younger students involved and thus acting as excellent role models. Those students that show great dedication and commitment to their House are made House Prefects and each House elects its own House Captains.

Prefects and Senior Five

During the Autumn Term of Year 12, students can apply to become a Prefect. The aim is to extend the range of social responsibilities and to spread that experience throughout the school community. To blend authority with sympathy and discretion is a searching task, but it leads to the maturity and depth of character which young people need to sustain them through higher education or in the first important years of employment. We are very proud of our Prefects and the role they take in supporting and representing our School and Sixth Form.



Prefects can apply to become a Senior Prefect in the Spring Term of Year 12. There are five Senior Prefect roles including our Captain of School.

The Senior Five complete a range of duties, providing an essential link between staff and students and the wider community. They are excellent ambassadors for the School and Sixth Form, representing us at events such as the Johnson Society dinner, the Johnson Birthday celebrations, the School Council and many more.

What we expect of Sixth Form Students

Work hard, achieve more.

The nature of Sixth Form study is very different from that which you will have experienced at GCSE. A wide variety of employers and universities are seeking young people with the sort of maturity and responsibility that non-compulsory education fosters. The Sixth Form programme aims to develop students' skills in various ways. We expect our students to demonstrate and develop:

- ◆ Commitment to their chosen courses
- ◆ A desire to learn
- ◆ Self-discipline to meet the needs of higher level work
- ◆ Determination to fulfil their potential
- ◆ Time management and organisation skills to meet work deadlines
- ◆ Leadership and team work skills

In addition to the main school subscription, the Sixth Form are also required to subscribe £5 per year. This allows for tea, coffee and drinking facilities to be provided. Each student will receive an academic diary as part of this package.

The Nature of Independent Study

A new maturity, a new challenge.

In previous years you were taught a full timetable. In the Sixth Form you will be confronted with a new challenge. Whether you are following A Level or Vocational courses, you will have 'study' periods, either in or outside school. Students should be aware that the hours of study outside lesson time should match the hours of lesson time provided in school. Students are expected to study for two to three hours each weekday evening during term time. Independent study periods during the day are intended to supplement learning taking place in the classroom.

Independent study forms a very necessary, important and deliberate part of the Year 12/13 course. Students who cannot organise their own work will be in no state of preparation to leave home and continue Higher Education. Accordingly, there is a four-fold system for students doing individual work:

- 1 The Sixth Form Centre is available throughout the day for students who wish to work in an informal, unsupervised environment.
- 2 The Q Block dining area is available for Sixth Form use during lesson times. Snacks can also be purchased in that room.
- 3 The Library Resource Centre is also available for students to carry out individual investigations. This is a quieter environment which allows for concentrated study.
- 4 Home release is granted to both Year 12 and Year 13, on condition that parents indicate their willingness for students to work at home at such specified times, and that the student signs in and out of school. Home release for Year 12 will be granted when departments are confident that students are meeting deadlines and coping with the demands of the course. Hopefully students will be in a position by October Half Term of Year 12 to have shown their capabilities in this area.

It is important to remember that Sixth Form study requires a new maturity and a high degree of personal responsibility. You have to organise your time efficiently to meet all your commitments. **Part-time employment should not exceed eight hours per week.**



Sixth Form Uniform

We are a Sixth Form with a uniform and are committed to high standards. Students need to maintain these standards by wearing the correct uniform to attend our Sixth Form. The Sixth Form uniform comprises:

- ◆ A black blazer with a school badge
(blazers should be worn at all times when walking around the school site)
- ◆ A plain skirt or tailored trousers (no leggings) in black or dark grey. Exceptionally short or long skirts would be both impractical and inappropriate in a working environment and are, therefore, not permitted in school.
- ◆ Skirts made out of stretchy material are not suitable. Dresses are not suitable.
- ◆ Suit style trousers and skirts with a **light** pinstripe may be worn. Items in fabric effects such as shiny, metallic or leather are not suitable.
- ◆ Plain black, grey or neutral tights (no footless tights or leggings).
- ◆ As an alternative to a black or white shirt and a school tie, Sixth Form students may wear **plain** clothing in black, grey or white which would be considered appropriate to be worn under a blazer in a place of work.
- ◆ Plain black shoes. Backless, toeless and shoes with high heels should not be worn. Boots may be worn under trousers. Sandals are not allowed.
- ◆ Studded, brightly coloured belts or those with large buckles should not be worn.

Items which would detract from the smart appearance of the workplace and are, therefore, not permitted include:

- ◆ Items with designs, logos or large insignia
- ◆ Ugg style boots
- ◆ Leggings or footless tights
- ◆ Sandals
- ◆ Dresses
- ◆ Hooded tops
- ◆ Stretchy skirts



Post 18 Options

Our students progress onto a variety of different options after their A Levels including university, higher level apprenticeships and employment.

University Applications

Information and advice regarding the University Council for Admissions (UCAS) is given to students through the Pastoral System beginning in the Spring Term of Year 12. This process continues for more than a year until each student who wishes to be, is placed by the time examination results are published. Support provided includes a Post 18 Options Introduction Day in the Summer Term of Year 12 where we have a variety of visiting speakers. Mrs Gillson is a highly experienced and skilled UCAS coordinator and is available to support students with their applications throughout the process. Students also have the opportunity to visit the Higher Education Fair at Birmingham NEC in the Summer Term of Year 12. King Edward VI Sixth Form students currently at university or in employment return to school to give advice and information to students. There is also an opportunity for all students to attend a Russell Group university and experience taster sessions.

One to one support is given by form tutors during tutor time and during a dedicated Post 18 Option progress check during the Autumn Term of Year 13. Tutors and teachers will give advice on personal statement drafts as well as providing subject specific references. All applications are rigorously checked before being sent to UCAS. We are proud of our very high levels of success with university applications, including those to Oxford and Cambridge and Russell Group universities.

Applicants for Oxford, Cambridge, Medicine and Veterinary Medicine

Students applying to Oxbridge or for courses in medicine, law or veterinary medicine work closely with Miss Williamson throughout Years 12 and 13. In addition to input from tutors, where is a variety of extra support provided. Students are given additional advice on their personal statements and application forms to ensure they meet the earlier deadline of 15 October. We also provide students with mock interviews and specific subject interviews such as a mini medical school for medical applicants. Students are also given suggested reading and viewing and provided with a wide selection of books exclusively for Sixth Form students upstairs in the Learning Resource Centre. In the Spring Term of Year 12, students are encouraged and supported in their applications to a variety of summer schools and master classes to enrich their educational experience and give them an experience of studying at a higher level at prestigious universities.

We have had a great deal of success with our higher level applications. Our successful students are keen to return to school and inspire current students to aim high and apply for these institutions.

Apprenticeships and Employment

We recognise that further education is not the route for all students. We therefore are keen to support those students who wish to undertake an apprenticeship or employment. Support is provided through the Careers Service and personal tutors to make such applications. References are written by subject teachers and collated by tutors. We have a number of students who have successfully secured places on higher level apprenticeships and professional employment in areas such as accountancy and business.

Students are proud to be alumni of King Edward VI Sixth Form. They go on to be excellent ambassadors for the school in their further study and employment. Many students return to the Sixth Form to share these experiences and encourage others to do the same. Every student of King Edward VI becomes an Old Edwardian and this Society provides the Sixth Form with many social activities throughout the year.

A selection of our Alumni success stories follow:

Student A has just graduated from the University of Oxford with a 2:1 in Biological Sciences. She is now completing the Teach first course.

Student B has graduated from the University of Birmingham with a First Class Honours degree in Mathematics. As part of his course, he spent a summer on an internship in Hong Kong with a leading financial company. He is currently working in Australia.

Student C was awarded a First Class Honours degree from the University of Manchester in Financial Management. She spent a summer completing an internship for a leading financial company in Dubai.

Student D is studying for a degree as part of paid employment with Unilever. She was selected from over 4,000 applicants.

After completing his A Levels in the Sixth Form and gaining a place at University, Student E decided to start his own business instead. He now runs a successful graphic design business and employs five people.

Gaining a First Class Honours degree at Nottingham Trent University has enabled Student F to gain graduate employment with Deloitte.

As well as playing Netball for England, Student G also attended Loughborough University to study Sport and Exercise Science.

After completing her dissertation on Victorian poetry at the University of Birmingham, Student H achieved a 2:1 in English and is now teaching speech and language.

After taking part in the Senior Physics Challenge and Senior Maths Challenge and Maths Team Challenge, Student I has recently achieved a First at the University of Cambridge and is now studying for a Masters qualification.

Student J has gone to complete a sponsored degree in Accountancy provided by a leading financial firm.

An apprenticeship in insurance and financial management was gained by Student K upon leaving the Sixth Form. He enjoyed the opportunity to gain specialist qualifications in this field and it resulted in full time employment on completion.

After completing his A Levels, Student L undertook an apprenticeship in Graphic Design. He has now completed this successfully and has obtained full time employment with his training company.

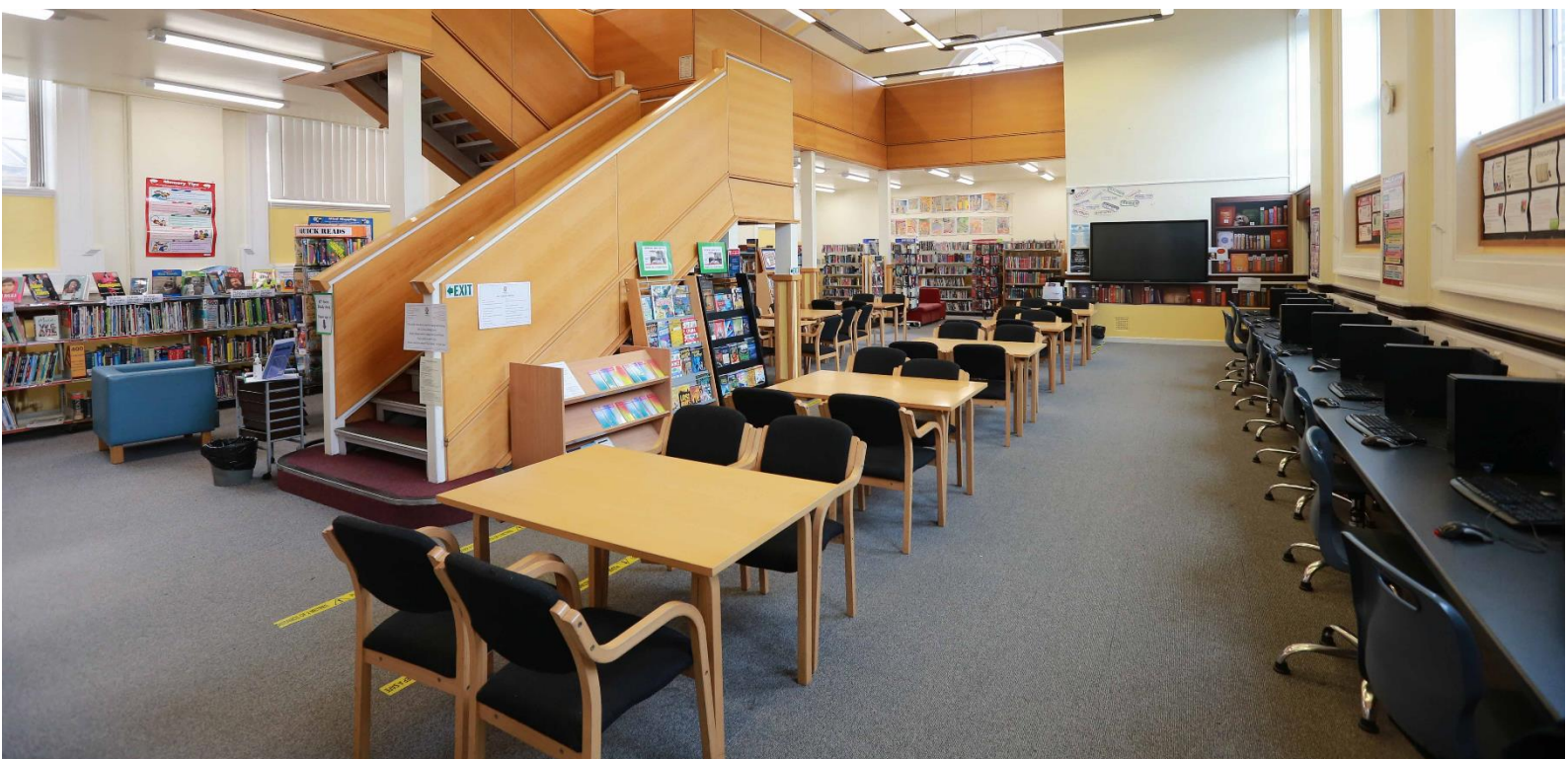
Library Resource Centre

King Edward VI School Library Resource Centre has everything students could need to support their studies in the Sixth Form.

The centre opens every weekday from 8.30am to 4.30pm offering excellent facilities for independent study and research including:

- ◆ Private Study area exclusively for Sixth Form use
- ◆ 10 networked computers with access to the Internet and a wide range of software packages.
- ◆ iPads (with wireless connection) for use within the centre
- ◆ Subscription to online products which are password protected exclusively for student use
- ◆ Information books, including a Sixth Form collection specialising in A Level texts
- ◆ A large selection of reference works including a variety of encyclopaedias and dictionaries
- ◆ A large stock of up to date fiction
- ◆ Free book lending service with over 400 fiction titles to choose from as well as thousands of copyright free classic e-books
- ◆ Specialist collections of books aimed at specific Sixth Form courses
- ◆ A wide range of periodicals, many of which specifically support A Level courses
- ◆ Photocopier/printers for student use

The Centre has the equivalent of two full time members of staff, a qualified Librarian and two Library Assistants, who are available at all times to give research advice and support students with their information needs.



Entry Requirements for Sixth Form Study

Our aim is to provide inclusive educational opportunities for all those who choose to continue their education. There are opportunities to create individual programmes of courses at Level 3.

Our Approach

We believe that you should start courses at King Edward VI Sixth Form with at least a reasonable chance of success. **The vast majority of our students will need to focus on successful completion of the equivalent of three courses across two years.** Our conditions of entry are detailed below.

As a general rule, students will be guided towards following course combinations dependent upon their GCSE results.

Note: Some departments have higher individual subject requirements, established in the light of experience. These are shown in the course descriptions and we would strongly encourage you to use the teachers' experience and advice when deliberating over subject choices.

GENERAL ENTRY REQUIREMENTS

Admission to Year 12 is subject to students meeting the following minimum entry requirements:

1. Gaining a **minimum of 33 points** from the **student's 7 best GCSE results** which must include **English** (Language and/or Literature) and **Maths** at Grade 4 or above.
2. Meeting each of the **subject specific entry requirements** that are outlined on each subject page. For example, students are also expected to have at least a grade 7 in GCSE Mathematics to study A level Mathematics.

A summary of all the entrance requirements for each subject can be found on page 22.

Calculating your Point Score

- ◆ Points have the same numerical value as the grade achieved. For example, a Grade 5 is equivalent to 5 points.
- ◆ Combined Science GCSE counts as two GCSEs and the two grades should be combined. For example a 7/6 would be 13 points.
- ◆ For students who have studied other Level 2 equivalent courses the following conversions should be used:

GCSE Grade	BTEC/Cache or equivalent grade	Points score
9		9
8	Level 2 Distinction*	8
7	Level 2 Distinction	7
6		6
5	Level 2 Merit	5
4	Level 2 Pass	4
3	Level 1 Distinction	3
2	Level 1 Merit	2
1	Level 1 Pass	1

Your Subject Options

Students will need to study 3 subjects at King Edward VI which can be a combination of A-Levels, BTECs or other equivalent qualifications. All these qualifications are two-year linear courses.

In addition, Core Maths and Young Enterprise can be chosen as a timetabled enrichment opportunity. There will be other enrichment opportunities that will be explained to you when you join us.

Late Criteria

Any applicants received after the application deadline of Monday 4th December will be classified as late.

Curriculum Offer

The Sixth Form Curriculum Offer is reviewed each year and the school may need to remove qualifications that are not viable due to low student uptake. The decision to remove subjects from the curriculum offer will be made as early as possible in the Spring Term. Students will be contacted by the Sixth Form Team if a qualification is removed and an alternative qualification will be offered where appropriate. Qualifications may still be removed from the Sixth Form Curriculum Offer after GCSE results day dependant on final enrolment of students.

Please be aware that there is a consultation in process for admission to the Sixth Form at King Edward VI School.

This is available via the school website and will run from Monday 6th November to Sunday 17th December 2023. This is due to the additional students already on roll at King Edward VI School in Year 11 and the limited capacity to offer Sixth Form places to external students. Children already in the school will not be required to apply formally for places in Year 12 but should have reached the minimum entry qualifications for admission into the sixth form, in addition to those for individual subjects, details of which are included in the prospectus.

Details of the oversubscription criteria can be found below. We value the contribution that external students make to our Sixth Form, we are happy to offer places where they are available on courses. The proposed waiting list for external students will remain in operation until 4th September 2024.

The full consultation is available via www.keslichfield.org.uk . Feedback can be sent via office@keslichfield.org.uk

Oversubscription Criteria for External Applicants

King Edward VI Lichfield operates a waiting list process for Year 12 admissions in the event that the Year 12 admissions number is oversubscribed. Applicants who are placed on the waiting list will only be offered a place in Year 12 if places become available in the subjects chosen by the applicant. Places will be allocated in accordance with the oversubscription criteria:

- ◆ Looked After Children and previously Looked After Children (in public care)
- ◆ Students who live nearest to King Edward VI Lichfield (straight line distance measured from home to school)

In the event that individual subjects are oversubscribed following the admissions process, places will again be allocated for each subject based on the oversubscription criteria above.

Students who are unable to study a subject (due to oversubscription) will be offered the opportunity to discuss a possible alternative subject where available.

Choosing your Options

One of the benefits of the Sixth Form is the opportunity to experience a free choice of subjects. The chance to put together a programme of courses that suits your personal interests, strengths and future career needs is exciting. This brings with it the responsibility of ensuring that you make the right choice.

Linear A Levels

Changes to A Levels have been introduced by the Government over the last three years so that the course will be linear with all assessments at the end of two years of study.

The first of the new A Levels was introduced for teaching in September 2015. The general expectation is that students will choose three A Levels in Year 12 and continue with those subjects for two years. Assessment on the A Level course is designed to test your understanding of the whole two year course, not just Year 13. Where appropriate academically, we will consider allowing students to sit four subjects, although this is not expected.

Applied A Level Courses

These are vocational courses linked to a broad occupational area. They are more careers focused than traditional A Levels and are an alternative route to Higher Education. The qualification is assessed using assignments or coursework and some exams.

Applied A Level courses can be studied as Single or Double Awards. The Double Award is equivalent to two A Levels and the Single Award is equivalent to one A Level.

BTEC Courses

BTECs are work-related qualifications, suitable for a wide range of students, which are designed to accommodate the needs of employers as well as allowing progression to university. They provide a more practical, real-world approach to learning alongside a theoretical background, and can be taken as well as, or instead of, A Levels.

They provide a specialist work-related qualification that covers the key knowledge and practical skills required in the vocational sector and also offer different emphasis through the choice of specialist units. It can be the equivalent to one or two A Levels depending on the qualification taken. Students should be aware that some of these are two year courses only.

Progression from Year 12 into Year 13

All students starting Year 12 are required to sign a Code of Conduct linked to achievement, attendance and behaviour. Failure to follow this code can result in a place not being offered in Year 13.

When assessing a student's ability to move into Year 13 the following will be taken into account:

- ◆ Department tracking throughout the year
- ◆ Attendance
- ◆ Termly Reports
- ◆ Year 12 internal examinations

Conduct and Attitude

At King Edward VI Sixth Form, as well as academic requirements, we expect you to:

- ◆ Work conscientiously and to make the best use of the opportunities offered
- ◆ Accept responsibility and maintain standards of personal conduct worthy of an older student of the school
- ◆ Abide by the dress and study regulations set out in this Prospectus
- ◆ Honour the agreement with the school that you sign on entering the Sixth Form

Choosing the Right Course

When choosing your subjects, you will need to consider a number of points such as:

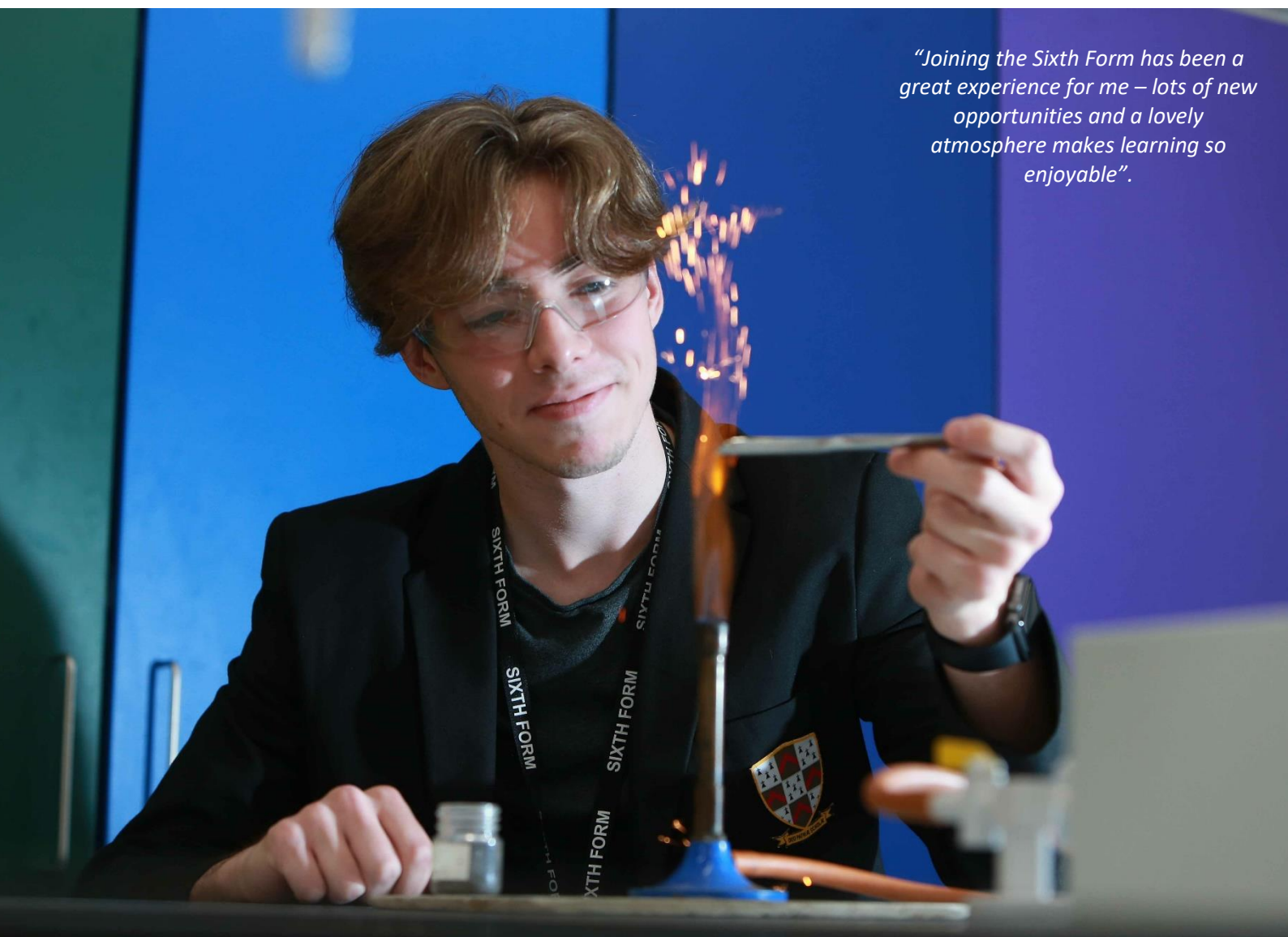
- ◆ How interested you are in the subject
- ◆ How well you have performed in the subject up to now, if it is not a new subject
- ◆ What your prospects are of success at a higher level
- ◆ If you have a particular university course or career in mind, what are the entry requirements?

Seek advice and information.

You have plenty of opportunity over the next few weeks/months to gain information and opinions:

- ◆ Ask your subject teachers about their subject and for their opinion of your suitability
- ◆ Look into new subjects which have not been offered before
- ◆ Ask current Sixth Formers for their opinions
- ◆ Seek careers advice
- ◆ Talk to the Sixth Form Leadership Team
- ◆ Read the Options Booklet.

"Joining the Sixth Form has been a great experience for me – lots of new opportunities and a lovely atmosphere makes learning so enjoyable".



The Application Process

<https://apps.switchlp.com/6thFormApp>

W/C Monday 6 November 2023

Courses booklet issued

Monday 6 – Friday 10 November 2023

Year 11 subject information week
(in lessons)

Thursday 9 November 2023

Sixth Form Courses Evening from 6pm – 8pm and
virtually throughout November

Monday 4 December 2023

Application Deadline for Year 12 places in 2024
<https://apps.switchlp.com/6thFormApp/>

January 2024

Internal subject discussions begin

March 2024

External subject discussions where candidates
may be invited to attend a short meeting in order to
discuss their suitability for their chosen courses

Formal offers will be issued at the beginning of April, once discussions with internal and external students have taken place. Final option blocks will also be issued for students to confirm that their chosen subject combination is available.



Subjects Offered

Course	Level	Additional Entry Requirements	Page
Accounting	A Level	Grade 5 in GCSE Mathematics or 4 in Maths & Grade 5 in two Sciences, Grade 4 in English	22
Art	A Level	Grade 5 in GCSE Art	23
Biology	A Level	Grade 6 in Combined Science or Biology plus Grade 6 in another Science, Grade 5 in Maths	25
Business	A Level	Grade 4 in English and Mathematics, Grade 5 in Business	26
Chemistry	A Level	Grade 6 in Combined Science or Chemistry plus Grade 6 in one other Science, Grade 6 in Maths preferred	28
Design & Technology – Product Design	A Level	Grade 5 in GCSE Design & Technology	30
Economics	A Level	Grade 5 in Mathematics, English, Science and Business Studies if taken at GCSE	31
English Language	A Level	Grade 6 in English Language and Literature	32
English Literature	A Level	Grade 6 in English Language and Literature	33
French	A Level	Grade 6 in GCSE French	35
Geography	A Level	Grade 5 in Geography, Grade 5 Mathematics, English and Science	36
German	A Level	Grade 6 in GCSE German	37
Health & Social Care - Certificate	BTEC Level 3	Grade 4 at GCSE in five subjects to include English and Maths and/or BTEC Level 2 in Health & Social Care	38
History	A Level	Grade 5 in History, Grade 5 in English	39
ICT – Cambridge Technicals	OCR Level 3	Level 2 Pass in an ICT course	40
Mathematics	A Level	Grade 7 in GCSE Mathematics	41
Mathematics – Further Mathematics	A Level	Grade 8 in GCSE Mathematics	42
Medical Science	Diploma	A Grade 5 in in two Sciences at GCSE, Grade 5 in English and Mathematics	43
Music	A Level	Grade 5 in GCSE Music and Grade 5 Instrument	44
Music Technology	RSL Level 3	Grade 5 in GCSE Music	46
Performing Arts	BTEC Level 3	GCSE Drama or BTEC Performing Arts preferred but not essential	47
Physics	A Level	Grade 6 in Combined Science or Physics plus one Grade 6 in another Science plus Grade 6 in GCSE Mathematics	48
Physical Education	A Level	Grade 6 PE at GCSE	49
Physical Education - BTEC National Certificate in Sport	BTEC Level 3	Grade 4 in English and Mathematics	50
Psychology	A Level	Grade 5 English, a Grade 6 in two Science GCSEs, 5 Mathematics	51
Religious Studies	A Level	Grade 6 in English or Grade 6 Religious Studies	52
Sociology	A Level	Grade 5 in English	53
Core Mathematical Studies	Level 3	Grade 5 in Mathematics	54
Young Enterprise Company Programme			55
Personal Development Programme			56
Advice and Guidance			57

A LEVEL ACCOUNTING

AQA: <https://www.aqa.org.uk/subjects/accounting/as-and-a-level/accounting-7127>

Why study A Level Accounting?

The A Level Accounting course introduces students to the basic accounting concepts and principles which will prepare them for a career in accounting and finance. The Accounting A Level provides an excellent foundation for the further study of accountancy at degree level or at entry level for the profession on an apprenticeship programme. Whilst for those students looking for a future career in business, but not wishing to specialise in accounts, the course provides an excellent introduction to the basic level of accounting knowledge required of all non-financial business managers.

How will I be assessed?

This course is examined through two exam papers each three hours long. **Both papers have three sections** which consist of:

Section A: Multiple choice and short response questions.

Section B: Structured calculations.

Section C: Extended written questions.

All exams are sat at the end of Year 13.

Prerequisites?

Accounting – it's all about numbers!

Students must enjoy numbers and be comfortable using them. Even though the Accounting A Level does not require students to be the greatest mathematicians, it is fundamental that students are confident in manipulating percentages and ratios. In addition, the abstract nature of accounting requires the ability to rote learn rules and remember complex presentational layouts.

Given the demands of the course, in addition to the entry requirements to attend KES Sixth Form, a minimum of a Grade 5 in Mathematics at GCSE is required. Students will also need a Grade 4 in English.

What skills will I gain from studying Accounting?

The A Level Accounting course teaches students the fundamental building blocks of accounts that are used in all businesses. From understanding basic double entry and the preparation of cashbooks, students will move on to preparing accounts from a trial balance for small business and, at the end of the course, will be completing accounts for limited companies and learning to analyse both financial accounts as well as the management accounts used by businesses in their day to day running.

Where can Accounting lead?

A Level Accounting can lead directly to studying an accounting degree at university, whilst it also supports students wishing to follow degree courses in Business, Finance and Management. Currently over 80% of students that study Business, Economics or Accounting at King Edward VI go on to follow a business related course at university.

However, given the direct application of accounting to the business world, the Accounting A Level also gives students the skills and understanding required for direct entry into the financial departments of businesses and leads naturally to the AAT professional accounting qualification and subsequently on to ACA, CIMA or ACCA.

Additional Comment

The Business Department has a consistent record of outstanding achievement across all three A Level subjects (ie Accounting, Business and Economics), which is based on the combination of excellent teaching, engagement in the subject and hard work and commitment from both teachers and students.

Contact: Mr C Chambers
Head of Business,
Economics and Accounting

What will I study?

Topics at A Level will include:

The Role of the Accountant
Double Entry and T-Accounts
Accounts of Sole Traders and Partnerships
Accounts of Limited Companies

Ratios and Financial Analysis
Budgeting and Cash Flow Statements
Internal Management Accounting
Ethical Issues in Accounting

A LEVEL FINE ART

AQA: <http://www.aqa.org.uk/subjects/art-and-design>

Why study A Level Fine Art?

Students will work with a wide range of materials and techniques with the purpose of helping them to express ideas, beliefs, opinions etc. in a visual way. The work of contemporary designers and artists as well as those from other times and cultures will be an important and integral part of the course, as is the importance of social and historical context.

How will I be assessed?

Year 12

Is an Introduction to and exploration of ideas, materials, techniques and processes aiding the development of skills, knowledge and understanding.

Introduction to research skills and processes.

No set assessment.

Year 13 Full A Level

Component 1

Personal Investigation – 60%

This will include a 1,000 – 3,000 word written response.

Component 2

Externally set Assignment – 40%

Preparatory period + 15 hours of supervised times.

There are four assessments, objectives against which all components must be measured.

Prerequisites

Grade 5 at GCSE Art and Design.

What skills will I gain from studying Fine Art?

The most important skill is that of **Independent Learning and thinking**. Each student with the help and one to one negotiation with experienced teachers can navigate their own pathway through largely personal investigation.

Where can Fine Art lead?

A very large field of opportunities are available for which Art and Design training is recommended e.g. Fine Art, Fashion, Textiles (with or without Marketing/Business, Merchandising, Buying etc.) Graphic Design, Product Design, Architecture, Media Studies, Film Studies etc. It is important to add that many students who have Art and Design as one of their chosen subjects in the Sixth Form have gone on to University to study a wide range of courses including English, Law, Medicine, Business Studies, Engineering and many more.

Additional Comment

The track record of the Art Department is Outstanding, achieving 100% pass rates each year with large numbers of students achieving the highest grades. Many students each year go on to further study at highly acclaimed institutions across the country.

Biannually there is a trip to New York in Year 13. There have also been trips to Paris, London and Liverpool.

Students will be expected to purchase a basic Art Pack at the beginning of the course.

What will I study?

Component 1

This is a practical investigation supported by written material. Students are required to conduct a practical investigation into an idea, issue, concept or theme, supported by written material. The focus of the investigation must be identified independently by the student and must lead to a finished outcome or a series of related finished outcomes. It must include evidence of the student's ability to research and develop ideas

and relate their work in meaningful ways to relevant critical/contextual materials.

Component 2

This will be in response to an externally set Stimulus. Showing their ability to work independently with time constraints.

Contact: Mrs L James – Head of Art

A LEVEL BIOLOGY

AQA: <http://www.aqa.org.uk/subjects/science/as-and-a-level/biology-7401-7402>

Why study A Level Biology?

Biology is the study of living organisms, but the subject has moved on by a long way from the days of dissecting rats and classifying half-eaten dead leaves, to become one of the most diverse and exciting topics available. Biologists are fundamental in the search for solutions to some of mankind's greatest challenges. Whether it be securing global food chains to feed the burgeoning human population, managing and reversing man's impact on the natural environment or developing effective treatments and vaccines to combat the scourge of disease. A-level biology provides a rigorous and fascinating introduction into this dynamic field.

The A-level biology course encompasses the study of a wide range of exciting and challenging topics, all at the cutting edge of present day scientific research. A few of these topics include, molecular biology, cell biology, human physiology, genes, heart and lung diseases, microbial diseases such as TB and Cholera, medical uses of DNA, cloning, stem cells, biochemistry, drugs and their effects, the study of ecosystems and the effect of man on the environment.

How will I be assessed?

Throughout the two years there are twelve compulsory practicals to be completed in lessons. In Year 1 you will study:

- ◆ Biological Molecules
- ◆ Cells
- ◆ Exchange in Organisms and with their Environment
- ◆ Genetic Information, Variation and Relationships between Organisms

In Exams in Year 13:

Paper 1 will assess you on any content from the four topics listed above and any relevant practical skills. It will be a two-hour paper and represent 35% of the A Level.

Paper 2 will assess you on any content from the following topics:

- ◆ Energy Transfers in and between Organisms
- ◆ Organisms Respond to Change
- ◆ Genetics, Populations, Evolution and Ecosystems
- ◆ The Control of Gene Expression

It will be a two-hour paper, including any relevant practical skills and be 35% of the A Level.

Paper 3 will assess you on any content from the eight topics listed so far and any relevant practical skills. It will be a two-hour paper and be worth 30% of the A Level.

Prerequisites

For students who have studied Combined Science, the entry requirements are an overall grade of a 6-6, with at least Grade 6 from the Biology component, plus another 6 ideally from Chemistry component.

For students who have studied Triple Biology, the entry requirements are an overall Grade 6 in Biology, and another Grade 6 from ideally Chemistry.

All students are required to achieve a Grade 5 or above in Mathematics from the Higher Tier Paper, to allow them to meet the Maths demand of the course.

What skills will I gain from studying A Level Biology?

While studying Biology you will gain several skills; many of them are transferable. These include assembling data, analysing and interpreting data and problem solving. Biology also involves evaluation and deduction. Lots of the work will be carried out independently, but you will also work closely with others as part of a team. Effective interpersonal skills are vital if you are to be successful in any organisation.

What else do I need?

You will need to purchase an A4 hard backed lined Laboratory Book (not spiral bound). These are available at a discount price from the Department or you may purchase your own. We also encourage our students to purchase revision guides from the department at discounted price. There is no expectation that students have to purchase the main text-book, as this is readily available to our students via Kerboodle.

Where can Biology lead?

Biology is one of the most popular A Level subjects in the country attracting students studying a wide range of other subjects. Many of these students enjoy the subject so much that they eventually choose a Biologically related degree course, such as Medicine, Dentistry, Veterinary Science, Physiotherapy, Pharmacy, Biomedicine, Microbiology, Physiology, Optometry, Anatomy, Nursing, Biochemistry, Zoology, Forestry, Marine Biology, Forensic Science, Food Science, the list is endless! Biology is recognised by many Universities as a challenging course, and opens doors to many non-biology related subjects including Business, Law and Education.

So whether you prefer to work in the field of Science, Education, Law or in Business, you will find Biology a very rewarding and challenging course, which will develop many of the skills essential for a successful career.

Contact: Miss A Shaw – Head of Biology

What will I study?

First Year Units:

- Unit 1: Biological Molecules
- Unit 2: Cells
- Unit 3: Exchange in Organisms and with their Environment
- Unit 4: Genetic Information, Variation and Relationships between Organisms

Second Year Units:

- Unit 5: Energy Transfers in and between Organisms
- Unit 6: Organisms Respond to Change
- Unit 7: Genetics, Populations, Evolution and Ecosystems
- Unit 8: The Control of Gene Expression Organisms

A LEVEL BUSINESS

OCR: <https://www.ocr.org.uk/qualifications/as-and-a-level/business-h031-h431-from-2015>

Why study A Level Business?

This course focuses on a problem solving approach to business designed to help students understand the nature and working of business organisations. The aim is to encourage students to develop a critical understanding of different businesses, the context in which they operate, the markets they serve, and ultimately recommend actions that businesses should take to be successful. Much of the learning is based around business case studies and focusing on how students can use their business knowledge to determine the success of a business.

How will I be assessed?

This is course examined by three separate exam papers each two hours long.

Unit 1 consists of multiple choice questions and longer written answers based around an unseen case study of a 'small' business.

Unit 2 consists of short response questions and longer written answers based around an unseen case study of a UK 'national' business.

Unit 3 is based around the case study of a 'global' business and includes both data response questions as well as longer written answers.

Prerequisites

In addition to the entry requirements to attend KES Sixth Form, a minimum of a Grade 4 in English and Mathematics at GCSE is required. Business at GCSE is not a requirement to study Business at A Level, however if you have studied Business at GCSE, a minimum of a Grade 5 must have been achieved.

What skills will I gain from studying Business?

Students will develop a broad understanding of the range of activities businesses undertake to compete and be successful in the local, national and global economy. In addition, students will learn to analyse various business scenarios, identify the key issues facing different businesses and make recommendations as to what approach the business should take to achieve its objectives.

Where can Business lead?

Students completing A Level Business go on to study a range of subjects at university (currently over 80% of students that study Business, Economics or Accounting at King Edward VI go on to follow a business related course at university) or go directly into employment. Business A Level can lead directly on to a Business degree course and in addition it is common for entry onto university subjects such as Accountancy, Law, Management, Economics and International Finance. Alternatively, A Level Business will give students a good grounding and the relevant skills essential for the successful transition into the world of work.

Additional Comment

The Business Department has a consistent record of outstanding achievement across all three A Level subjects (ie Accounting, Business and Economics), which is based on the combination of excellent teaching, engagement in the subject and hard work and commitment from both teachers and students.

What will I study?

Topics at A Level will include:

Business Ownership
The Functions of Business including Finance, Marketing, People and Operations Management
Business Finances
Business Objectives and Strategy

Managing Change
Business Investment Decisions
Business and International Trade
External Influences on Business

Contact: Mr C Chambers – Head of Business, Economics and Accounting



A LEVEL CHEMISTRY

AQA: <http://www.aqa.org.uk/subjects/science/as-and-a-level>

Why study A Level Chemistry?

Chemistry underpins and helps explain the world around us. It is at the forefront of many topical and important issues such as nanotechnology and is seen as a prestigious A Level by many universities, being listed as a preferred subject for entry to Oxbridge courses.

There are many science-related opportunities including Medicine, Pharmacology and Veterinary Sciences, as well as non-science related courses such as Law and Accountancy.

How will I be assessed?

After the second year of study there will be three written papers with weightings of 35%, 35% and 30%. These will cover the full course content as well as experiment techniques encountered during a minimum of twelve 'required practicals'.

Practical skills are assessed during the course and are given a pass/fail status; this does not count towards the final grade. Practical work must be kept in a Laboratory Book.

Prerequisites

Students who have followed Combined Science need a minimum of two Grade 6s at GCSE. Students who have studied Triple Science also must have achieved a Grade 6 (one of which must be in Chemistry) and a Grade 6 in another science. The nature of the course includes a strong mathematical element, so a minimum of a Higher Paper Grade 5 (or preferably a Grade 6) in Mathematics is also required.

What will I study?

The course covers Physical, Inorganic and Organic Chemistry as well as Practical Work that is assessed throughout the course.

What skills will I gain from studying Chemistry?

- ◆ A capacity for calculating, computing and applying formulae
- ◆ Able to assemble and assess data
- ◆ Able to develop ideas, gather information, analyse, evaluate and deduce
- ◆ Able to work independently and as part of a team to achieve results
- ◆ Able to meet deadlines

What else do I need?

You will need to purchase two A4 Laboratory Books. These are available at a discount price from the LRC or you may purchase your own (not spiral bound).

Where can Chemistry lead?

- ◆ Petrochemical Industry
- ◆ Dentistry
- ◆ Veterinary Science
- ◆ Pharmacy
- ◆ Medicine
- ◆ Food Science
- ◆ Environmental work
- ◆ Biochemistry
- ◆ Law
- ◆ Accountancy
- ◆ IT
- ◆ Engineering
- ◆ Architecture



Contact: Mr J Phillips – Co-ordinator of Chemistry



A LEVEL ECONOMICS

OCR: <https://www.ocr.org.uk/qualifications/as-and-a-level/economics-h060-h460-from-2019/>

Why study A Level Economics?

The Economics A Level course deals with the choices that people, firms and countries make and the impact these decisions have on people's lives. It is from this simple basis that all of the economic problems in the world around us arise and hence leads to questions that need to be answered, such as:

- ◆ Is inflation bad?
- ◆ What was the cause of the global financial crisis?
- ◆ Would a reduction in house prices be good for the UK?
- ◆ Are workers in the third world exploited?

The aim of the course is to help students understand the issues that need to be addressed when such questions are raised and apply the relevant economic theories and models to arrive at possible solutions.

How will I be assessed?

This course is examined by three separate exam papers, each two hours long.

Units 1 and 2 both contain an unseen case study with data response questions plus options of two out of four longer written answers.

The **Unit 3** exam includes multiple choice questions plus longer written questions based around an extended unseen case study set on a specific economic 'theme'.

All exams are sat at the end of Year 13.

Prerequisites

Economics is a demanding subject requiring the study of abstract models and the analysis of data together with the production of long written answers. As such, in addition to the entry requirements to attend KES Sixth Form, a minimum of a Level 5 Grade needs to be achieved in each of Mathematics, English and Science. . Business at GCSE is not a requirement to study Economics at A Level, however if you have studied Business at GCSE, a minimum of a Grade 5 must have been achieved.

What skills will I gain from studying Economics?

Economics requires students to develop a range of skills; from the use of theoretical models to the construction of coherent and well-structured arguments, all of which will need to be under pinned by a good grasp of the current UK and world economic environments. The subject will give students the tools to look at the world from an alternative perspective and understand how many seemingly disparate issues are, in fact, deeply integrated and dependent on each other.

Where can Economics lead?

Students taking Economics often go on to university to study a range of subjects from Economics, Business, International Finance, Accountancy, Law, Management and PPE. Currently over 80% of students that study Business, Economics or Accounting at King Edward VI go on to follow a business related course at university. In addition, Economics is a well respected subject for a range of professions including Accountancy, Business and Law; whilst in the long term it can open doors for work at institutions such as HM Treasury, the European Parliament and the World Bank.

Additional Comment

The Business Department has a consistent record of outstanding achievement across all three A Level subjects (ie Accounting, Business and Economics), which is based on the combination of excellent teaching, engagement in the subject and hard work and commitment from both teachers and students.



Contact: Mr C Chambers
Head of Business,
Economics and Accounting

What will I study?

Topics at A Level will include:

Microeconomics:

- ◆ Scarcity and Choice
- ◆ Competitive Markets
- ◆ Market Power and Market Failure
- ◆ The Labour Market

Macroeconomics:

- ◆ Economic Growth and Development
- ◆ Fiscal, Monetary and Supply-side Policy
- ◆ The Financial Sector
- ◆ Globalisation and International Trade

A LEVEL ENGLISH LANGUAGE

AQA: <https://www.aqa.org.uk/subjects/english/as-and-a-level/english-language-7701-7702>

Why study A Level English Language?

English Language is the study of how language works and how it is used differently by a range of users, and how language is represented in a variety of texts. You will learn about relevant topics such as Language and Power and Language and Gender, thus enabling you to discover how social contexts affect our language use. At A Level, you will study our changing language history and the journey our language has been on, its place as a global language, how children acquire language, as well as exploring the influence of Language in the Media.

A Level English Language is very different to the GCSE course; you will learn to use precise linguistic terminology and analyse complex grammatical structures. It will encourage you to develop your interest in an appreciation of English through learning about its structures and functions and developments and variations. You will learn a range of linguistic frameworks that you will use in your analysis of a wide range of modern and older texts.

How will I be assessed?

Unit 1 is a 2½ hour exam which has two sections: Textual Variations and Representations and Children's Language Development.

Unit 2 is a 2½ hour exam which has two sections: Diversity and Change and Language Discourses.

Unit 3 is coursework, where students undertake their own research and complete a language investigation of 2,000 words and a piece of original writing and commentary of 1,500 words.

Prerequisites

Grade 6 in English Language and English Literature



What skills will I gain from studying English Language?

Studying English Language will help you to develop and improve your ability to express yourself in speech and writing with clarity and precision. It will enhance your critical and analytical skills and enable you to analyse the linguistic features found in texts in ways that are very different to the analysis you do in your GCSE.

It will also allow you to write creatively and analytically for a wide range of different audiences and purposes. Original writing will ensure that you consider the use of vocabulary and grammar appropriate both for the content and the context of your work.

The coursework element at A Level will allow you to write more independently and with a reasonable degree of autonomy regarding subject matter. You will also make informed decisions, analyse data and evaluate your findings.

Where can English Language lead?

English Language is a broad and relevant subject which will allow you to pursue a diverse range of career options such as Law, Journalism, Advertising, Publishing, Marketing or Teaching.

The world really is your oyster if you can use English effectively, recognising its position as a global language.

Additional Comment?

This subject is a great stepping stone to linguistics-based courses at university, but it is not always accepted by all universities for an English Language and Literature degree, where A Level Literature is still preferred. (Or both)

What will I study?

A Level Units:

Unit 1: Language, the Individual and Society - Exam

Unit 2: Language Diversity and Change – Exam

Unit 3: Language in Action - Coursework

Contact: Miss R Phillips - Head of English Department

A LEVEL ENGLISH LITERATURE

AQA: <http://www.aqa.org.uk/subjects/english/as-and-a-level/english-literature-b-7716-7717>

Why study A Level English Literature?

Studying English Literature at A Level will give you the opportunity to read widely, critically and independently across centuries, gender and genre. The course encourages the enjoyment of literary studies founded on an informed personal response to a wide range of texts. It will enhance your understanding of the different ways authors convey meaning and how they comment on the issues of their times and influence us as readers. The analytical skills you will develop will be of great value to you in all other subjects.

How will I be assessed?

Unit 1 is a 2½ hour exam which has three sections: A passage based question on a Shakespeare set text; an essay question on a Shakespeare set text; and an essay linking two further texts, one of which must be a drama text and the other pre-1900.

Unit 2 is a 3 hour exam which has three sections: A question on an unseen passage; an essay question on a set text; and an essay question connecting two further set texts. One of the texts must be post-2000, another pre-1900 and the final text must be poetry.

Unit 3 is coursework, where students write two essays of between 1,250 and 1,500 words each, focusing on different texts and different aspects of critical theory.

You will be expected to display your ability to successfully analyse writers' techniques, literary devices and use of language while conveying an excellent understanding of the whole texts themselves and the themes and issues presented by the authors. You will also be required to effectively compare the use of language and the different intentions of writers from different time periods.

Prerequisites

Grade 6 in English Language and English Literature.

What skills will I gain from studying English Literature?

Studying English Literature will assist you in developing insightful, creative and sophisticated critical skills that will enable you to analyse a broad range of texts in real depth. It will also allow you to enhance the sophistication of your written work, improve your essay writing expertise and attain effective research skills. Your lessons will encourage you to enrich your ability to present an argument, engage in debate and to discuss your responses to texts as a group. You will be expected not only to develop your own independent opinions but also to consider and respond to the views of others while doing this.

Where can English Literature lead?

English Literature is a very well respected A Level which many degree courses find an attractive attribute in prospective students. It is a broad and relevant subject which will allow you to pursue a diverse range of career options such as Journalism, Law, Advertising, Publishing, Marketing or Teaching.

Additional Comment

By studying English Literature at A Level you will develop a diverse range of skills that will help you in all walks of life. This subject is a great stepping stone to many degree courses. An English Literature A Level is usually a requirement if you want to be accepted to study an English degree.



What will I study?

Unit 1:	Literary Genres/Tragedy – Exam
Unit 2:	Texts and Genres/Crime Fiction – Exam
Unit 3:	Theory and Independence - Coursework

Contact: Miss R Phillips – Head of English Department



A LEVEL FRENCH

AQA: <http://www.aqa.org.uk/subjects/languages/as-and-a-level/french-7652>

Why study A Level French?

You will enjoy it! In addition to developing your fluency in French, you will study a range of interesting topics which will give you a great understanding of the French-speaking world, its people, culture and history.

French is spoken on every continent in the world and has around 200 million speakers - a true global language! It is an official language in 29 countries eg France, Belgium, Canada, Luxembourg, Switzerland, Senegal . . . which opens up the job market for you. In our 21st century global economy, your future will be greatly enhanced by knowledge of a foreign language and according to The Independent, can even be 'extremely lucrative' for your career opportunities.

Former School Standards Minister Nick Gibb has said:

"It has never been more important for young people to learn a foreign language than now. An outward looking global nation needs a new generation of young people comfortable with the language and culture of our overseas trading partners."

How will I be assessed?

There are three exams at A Level, all taken in the summer of Year 13:

- ◆ Paper 1: A Listening, Reading and Writing test
- ◆ Paper 2: A Written exam based on the film and book studied
- ◆ Paper 3: An Oral exam, including questions based around an independent research project

In the Listening exam you have individual control of the material and can pause, repeat etc as you wish.

Prerequisites

Students should have achieved at least a strong Grade 6 at GCSE.



This is Fiona doing work experience at the library in Limoges

Contact: Mrs J Briden – Head of French

What skills will I gain from studying French?

There are so many cognitive benefits to being able to speak more than one language including improved memory and decision making as well as increased literacy skills.

Universities and employers value an A Level in a language because of the impressive range of transferable skills you develop. According to various research studies, these include:

- ◆ Interpersonal
- ◆ Communication
- ◆ Confidence
- ◆ Intercultural understanding and awareness
- ◆ Problem Solving
- ◆ Multi-tasking
- ◆ Enhance Productivity

Where can French lead?

Good language skills open the door to an array of exciting opportunities and careers. A survey of employers by the Confederation of British Industries (CBI) and Pearson found that almost two thirds of businesses say foreign language skills are important among their employees, particularly in helping build relations with clients, customers and suppliers.

Languages can be combined with almost any other subject at university; from sciences to journalism, law to accountancy and engineering to marketing. Indeed, many graduate application forms include a separate section for language ability showing how much employers value languages.

Additional Comments

This course is challenging yet rewarding and students who study A Level French with us achieve excellent grades and often continue to study the language at university. If you study languages at university, even as part of another degree, you will have the fantastic opportunity of spending a year abroad, possibly as an assistant or at a job placement or a university. Languages are your passport to travel easily for work or for pleasure.

Matthew Fell, CBI UK Policy Director has said:

"As the UK looks to strengthen its trading relationships with nations across the world, our education system must adapt to support this goal. Studying foreign languages, developing cultural awareness and understanding global business is vital if the UK is to maintain a competitive edge on the international stage."

What will I study?

French speaking Society & Culture

Year 12:

Family
Cyber Society
Volunteering
One film in French
Culture & Heritage
Contemporary Music
Cinema

Year 13:

Diverse Society
Poverty
Crime
One book in French
Teenagers & the Vote
Demos & Strikes
Politics & Immigration

A LEVEL GEOGRAPHY

AQA: <http://www.aqa.org.uk/subjects/geography/as-and-a-level>

Why study A-Level Geography?

Geography is relevant to the world we live in and it tackles issues that affect us. It helps us understand different cultures, develops sensitivity and tolerance, helps promote environmental responsibility and helps us make sense of a highly interconnected world. It leads to a better understanding of the concept of place and its importance in our world and will help develop your 'Geographical Intelligence', which is your ability to link together different areas of study, to understand the concept of scale and to apply a high degree of critical analysis to what you read, hear and see.

How will I be assessed?

You will be assessed at the end of the two year course in two examinations (see below). These will both be 2½ hour papers and the question types will be multiple-choice, short answer, levels of response and extended prose. These two papers are worth 40% each. The final element is an independent study carried out during the course which is around 3,000 – 4,000 words. This must be based on a question defined by the student relating to any part of the specification content.

What are the entry requirements?

Students will need to attain at least a Grade 5, **although a 6 is strongly recommended**, at GCSE in Geography and at least a Grade 5 in English, Mathematics and Science, due to the nature of the A Level course which requires high level literacy and statistical skills. In addition, students will need to have an Attainment 8 average score of over 5.0. If students have not taken GCSE Geography, then an Attainment 8 average score of 7.0 or above is necessary and suitability must be discussed with the Head of Department on a case by case basis.

What skills will I gain from studying Geography?

The study of Geography will help you develop a wide variety of basic skills including communication both written, verbal and using ICT to make presentations. Numeracy is an integral component of Geographical skills along with graphicacy (drawing and interpreting maps and diagrams). You will also collect primary data in the field, problem solve, use geographical information systems. In addition, you will collect, interpret and present a wide variety of data throughout the duration of the course.

Where can Geography lead?

As a bridge subject between the arts and the sciences, Geography can lead in a variety of different employment directions, including administrative and public services eg Development Control & Planning. Management and Journalism are also popular uses of Geography. Meteorology, Environmental or Waste Management are other potential careers utilising Geography.

Additional Comment

It is now compulsory for students to undertake four days of fieldwork at A Level. We will complete this by carrying out a four-day residential course (based on previous years, the cost of this has been roughly £500). This will cover the Human and Physical aspects of the course but also allow students the opportunity to collect their data for their independent field study.



What will I study?

Component 1

Physical Geography Paper

Section A: Water and Carbon Cycles

Section B: Glacial Environments

Section C: Hazards

Component 2

Human Geography Paper

Section A: Global systems and global governance

Section B: Changing Places

Section C: Contemporary urban environments

Component 3

Geographical Investigation

Students complete an individual investigation which must include data collected in the field.

Contact: Mrs K Lowe – Head of Geography

A LEVEL GERMAN

AQA: <http://www.aqa.org.uk/subjects/languages/as-and-a-level/german-7662>

Why study A Level German?

You will enjoy it! In addition to becoming increasingly fluent in German, you will study a wide variety of fascinating topics. These topics will give you an amazing insight into the German speaking world, its people, culture and history.

German is the most spoken language in the European Union and the tenth most widely-spoken language in the world and, as such, opens up potential business and career opportunities. In our 21st century global economy, your future will be greatly enhanced by the study of language. Indeed, according to a recent article in The Independent, speaking another language can be 'extremely lucrative' for your career opportunities.

Former School Standards Minister Nick Gibb has said:

"It has never been more important for young people to learn a foreign language than now. An outward looking global nation needs a new generation of young people comfortable with the language and culture of our overseas trading partners."

How will I be assessed?

There are three exams at A Level, all taken in the summer of Year 13:

- ◆ Paper 1: A Listening, Reading and Writing test
- ◆ Paper 2: A Written exam based on the film and book studied
- ◆ Paper 3: An Oral exam, including questions based around an independent research project

In the listening exam you have individual control of the material which you can pause, repeat etc as you wish.

Prerequisites

Students should have achieved a strong Grade 6 or above at GCSE.

What skills will I gain from studying German?

There are so many cognitive benefits to being able to speak more than one language including improved memory and decision making as well as increased literacy skills.

Universities and employers value an A Level in a language because of the impressive range of transferable skills you develop. According to various research studies, these include:

- ◆ Interpersonal
- ◆ Communication
- ◆ Confidence
- ◆ Problem Solving
- ◆ Intercultural understanding and awareness
- ◆ Multi-tasking
- ◆ Enhanced productivity

Where can German lead?

Good language skills open the door to an array of exciting opportunities and careers. A survey of employers by the Confederation of British Industries (CBI) and Pearson found that almost two thirds of businesses say foreign language skills are important among their employees, particularly in helping build relations with clients, customers and suppliers.

Languages can be combined with almost any other subject at university; from sciences to journalism, law to accountancy and engineering to marketing. Indeed, many graduate application forms include a separate section for language ability showing how much employers value languages.

Additional Comments

This course is challenging yet rewarding and students who study A Level German with us achieve excellent grades and often continue to study the language at university. If you study languages at university, even as part of another degree, you will have the fantastic opportunity of spending a year abroad, possibly as an assistant or at a job placement or a university. Languages are your passport to travel easily for work or for pleasure.

Matthew Fell, CBI UK Policy Director has said:

"As the UK looks to strengthen its trading relationships with nations across the world, our education system must adapt to support this goal. Studying foreign languages, developing cultural awareness and understanding global business is vital if the UK is to maintain a competitive edge on the international stage."

What will I study?

Year 12

The changing state of the Family
The Digital World
Youth Culture: fashion and trends, music, television
Festivals and Traditions
Art and Architecture Politics and Youth
Cultural life in Berlin. past and present

Year 13

Immigration
Integration
Racism
German and the European Union
German re-unification and its Consequences

Contact: Mrs S Dunn – Head of MFL

BTEC LEVEL 3 NATIONAL CERTIFICATE IN HEALTH & SOCIAL CARE

https://qualifications.pearson.com/content/dam/pdf/BTEC-Nationals/Health-and-Social-Care/2016/specification-and-sample-assessments/9781446938003_BTEC_Nat_ExCert_HSC_AG_Spec_Iss3C.pdf

Why study BTEC Level 3 Health and Social Care?

About 3 million people in the UK work in health and social care. In healthcare, this includes jobs such as doctors, pharmacists, nurses, midwives, healthcare assistants and administrators, while social care roles include care assistants, social workers, occupational therapists and counsellors.

Demand for both health and social care is likely to continue to rise, so it is sure to continue to play a key role in UK society, and the demand for people to fill these vital jobs will increase.

How will I be assessed?

The BTEC Extended Certificate in Health and Social Care (*Equivalent to 1 A Level*) is assessed using a combination of internal assessments, which are set and marked by your teacher and external assessments that are marked by the exam board.

Assessment breakdown	
Internal assessment	<ul style="list-style-type: none">Unit 5 – 25% of final gradeOptional unit – 17% of final grade
Examined assessment	<ul style="list-style-type: none">Unit 1 – 25% of final gradeUnit 2 – 33% of final grade

What are the entry requirements?

Learners need five GCSEs at Grade 4 or above and/or BTEC Level 2 Health and Social Care qualification. Achievement in English and Mathematics at GCSE level.

What skills will I gain from studying Health and Social Care?

There are opportunities during this course for you to develop the following employability skills:

- cognitive and problem-solving skills:** use critical thinking, approach non-routine problems applying expert and creative solutions, use systems and technology

- intrapersonal skills:** communicating, working collaboratively, negotiating and influencing, self-presentation
- interpersonal skills:** self-management, adaptability and resilience, self-monitoring and development.

Where can Health and Social Care lead?

This course is taken alongside other qualifications as part of a two-year programme of learning. This will enable you to progress to a degree programme chosen from a range of programmes in the health and social care sector.

In the past, students have taken courses leading to professional qualifications in Primary Teaching, Nursing and Occupational Therapy, Midwifery, Speech Therapy, Social Work and Physiotherapy.

Some students have opted to take a subject oriented degree course at university, such as Criminology, Social Policy, Early Years Studies and Health Studies.

Other students have immediately entered employment where they have taken up places in nurseries, nursing and residential homes where they have pursued further training. Apprenticeships may also be available in these key areas.

Additional Comment

The format of the lessons will vary, and you will have the opportunity to learn through a mixture of activities – whether working individually or in groups. You will participate in role plays, discussions and presentations.

The results in the past have been outstanding and exceed in most cases, the expected target grades of the students.

Contact: Miss C Socratous
Teacher of Health and Social Care

What will I study?

You will complete the following mandatory units:

- Unit 1 Human Lifespan Development** | External Assessment 1½ hours
- Unit 2 Working in Health and Social Care** | External Assessment 1½ hours
- Unit 5 Meeting Individual Care and Support Needs** | Internal Assessment

You will also complete one of the following optional **internal assessment** units. Optional units include:

- Unit 10 Sociological Perspectives**
- Unit 11 Psychological Perspectives**
- Unit 12 Support Individuals with Additional needs**
- Unit 14 Physiological Disorders and their Care**

A LEVEL HISTORY

AQA: <http://www.aqa.org.uk/subjects/history/as-and-a-level>

Why study A Level History?

History is a hugely valuable subject which tells the vital story of how and why things change. Studying history enables you to understand the present and to think about the future. As well as its own significance, history contributes effectively to a range of literary subjects and is very highly regarded by universities. It is a well taught subject with committed expert staff and results have been excellent over a number of years. At A Level, students have the opportunity of producing an independent enquiry on British Women's rights. Not only is this rewarding in its own right but it helps to prepare students for the requirements of a university course, and enables them to study in depth an aspect that is interesting to them.

How will I be assessed?

For A Level there are two written exams of 2½ hours plus up to 4,500 word Historical Enquiry (mini dissertation/personal study)

Prerequisites

Grade 5 and above in History and Grade 5 in English.

What skills will I gain from studying History?

Historians have always made a virtue of the importance of reaching objective judgements based upon a broad range of reading and an understanding of a wide range of sources. Historians will have the ability to write clear, literate, synoptic, analytical prose that represents balanced assessment of the evidence but which does not fight shy of drawing conclusions.

Where can History lead?

History is highly regarded by universities and compliments an application to any degree course including Law, Journalism, Politics and even Maths or Medicine; and of course History. Any employer would view History as appealing due to its transferable skills that show the ability to evaluate information and present reasoned arguments. Many of Britain's top company bosses have history degrees. People as diverse as Jonathan Ross, Gordon Brown, Anita Roddick, Chris Martin, Sacha Baron Cohen and Louis Theroux have history degrees.



What will I study?

Year 12

1C- The Tudors: England 1485 – 1553

2Q- 'The American Dream' USA 1945 – 1960

Year 13

1C- The Tudors: England 1553 - 1603

2Q- 'The American Dream' USA 1960-1980

Non Exam Assessment (Historical Enquiry)

Contact: Mrs L Gray – Head of History

OCR: CAMBRIDGE TECHNICALS

INTRODUCTORY DIPLOMA IN IT – LEVEL 3

<https://www.ocr.org.uk/qualifications/cambridge-technicals/information-technology/#level-3>

What are the Cambridge Technicals?

The Cambridge Technicals are vocational qualifications at Level 3 for students aged 16+ who prefer to study IT in a context that allows them to learn and be assessed in ways that are practical and relevant to the IT Sector.

Why study OCR Cambridge Technicals in IT?

This qualification is designed to give learners a range of specialist knowledge and transferable skills in the context of applied IT, providing them with the opportunity to enter an apprenticeship, move directly into employment or progress to a related Higher Education (HE) course.

How will I be assessed?

There are a wide range of centre assessed units with practical and wider project-based assessment opportunities, as well as examined units on the Fundamentals of IT and Global Information.

Learners will follow the Application Developer pathway.

It is a requirement that employers are engaged in the delivery of this qualification.

How is the Course graded?

The units are graded Pass, Merit and Distinction. The qualification is graded Pass, Merit, Distinction and Distinction*.

What will I study?

Two Mandatory Units

Unit 1: Fundamentals of IT
Unit 2: Global Information

Plus Three Option Units

Unit 6: Application Design
Unit 9: Product Development
Unit 21: Web Design and Prototyping

What are the entry requirements?

The following requirements are essential as a foundation for this course, either

- ◆ Grade 4 or above GCSE Computer Science/Media Science
- ◆ Level 2 Pass or above in Cambridge Nationals IT or Creative iMedia Certificate
- ◆ Equivalencies in other vocational qualifications or high points scores in other subjects

What skills will I gain from studying ICT?

Students will gain an insight into the IT Sector and investigate the pace of technological change, IT Infrastructure and the flow of information on a global scale and the importance of legal and security considerations. Students will also develop professional, personal and social skills through interaction with peers, stakeholders and clients, as well as theoretical knowledge and understanding to underpin these skills. The course will enhance learners' knowledge, skills and understanding with respect to the development of specifications and the designing, building or testing of applications.

Career Opportunities

Cambridge Technicals provide a strong base for progression to university, apprenticeships or work and are recognised for UCAS tariff points.

Additional Comments

The course is equivalent to one A Level.



Contact: Miss S Burton – Head of ICT and Computing

A LEVEL MATHEMATICS

EDEXCEL: <https://qualifications.pearson.com/en/qualifications/edexcel-a-levels/mathematics-2017.html>

Why study A Level Mathematics?

Mathematics provides the foundations for everything we use in our lives on a daily basis. From using prime numbers for securing financial transactions on the internet to the logistical complications of timetabling our train networks to the mathematics of 4-D ultrasound scans during pregnancy. As well as being a challenging and enjoyable study in its own right, having a sound knowledge of mathematical principles and techniques and an awareness of the vast range of possible applications will provide you with the confidence to deal with the mathematical elements of your chosen course of study at A Level and beyond.

How will I be assessed?

Mathematics is assessed purely by examination and there will be three two hour papers to be taken at the end of the course. Two Pure and one Applied Paper.

The papers will assess students' knowledge and application on both Pure and Applied Maths in the following proportions:

Pure Maths 67%

Statistics and Mechanics 33% combined

Students will be assessed on their ability to use and apply skills (50% of marks), ability to reason, interpret and communicate mathematically (25%) and problem solving and modelling (25%).

Prerequisites

The course is very demanding and requires participants to have a strong natural understanding and enjoyment of Mathematics. It is therefore required that you have a **minimum of Grade 7** in Mathematics at GCSE level.

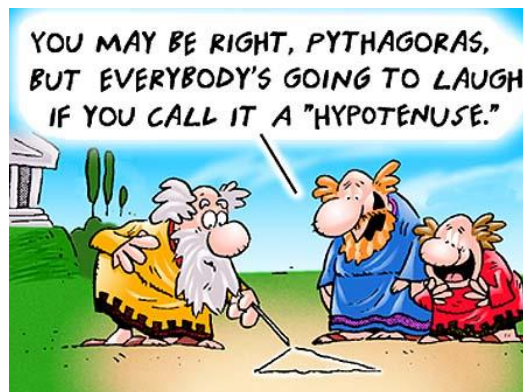
What skills will I gain from studying Mathematics?

Employers love mathematics graduates!

Mathematicians are, of course, highly numerate. You will learn to think clearly and logically, to analyse situations, to organise. You will have developed very special skills which you can use in devising solutions to complex problems in a range of situations.

Where can Mathematics lead?

Where to start? The list of possible careers for Mathematicians is endless; what follows are just a few possible suggestions. Perhaps in combustion phenomena for an oil company, in weather forecasting, in stock control for a large national retail company, in the statistical analysis of field trials for a drug company. Maybe computing modelling or software development, financial services such as banking, accountancy or actuarial. Or how about engineering, risk management, product design and development, marketing or a statistician. The versatility of mathematics students makes them highly sought after by employers. Career prospects for mathematics students are therefore excellent.



What will I study?

Pure Maths:

Algebra and Function
Coordinate Geometry
Sequences and Series
Trigonometry
Exponentials and Logarithms
Differentiation and Integration
Numerical Methods
Vectors

Mechanics:

Quantities and Units
Kinematics
Forces and Newton's Laws
Moments

Statistics:

Statistical Sampling
Data Presentation and Interpretation
Probability
Statistical Distributions
Hypothesis Testing

Contact: Mrs K Naylor or Mrs E Coxon Joint Head of Maths

A LEVEL FURTHER MATHEMATICS

EDEXCEL: <https://qualifications.pearson.com/en/qualifications/edexcel-a-levels/mathematics-2017.html>

Why study A Level Further Mathematics?

Mathematics provides the foundations for everything we use in our lives on a daily basis. From using prime numbers for securing financial transactions on the internet to the logistical complications of timetabling our train networks to the mathematics of 4-D ultrasound scans during pregnancy. Further Mathematics takes your study of the subject beyond the requirements of the Mathematics course and gives a much wider range of content and higher degree of difficulty.

Universities hold this qualification in high regard and some universities adjust their entry requirements based on whether one of the A Levels is Further Mathematics. Having Further Mathematics on a CV is something that will distinguish you from others as a gifted Mathematician.

MATHEMATICS
is not about
numbers, equations,
computations, or
algorithms:
it is about
UNDERSTANDING.

William Paul Thurston

How will I be assessed?

Further Mathematics is assessed purely by examination at the end of the course.

Four exams of 1½ hours each:

The first two papers will assess Core Maths and the second two options selected from Further Pure, Mechanics or Decision Maths.

Prerequisites

Further Mathematics is a demanding course that is suitable only for the most able Mathematicians; it is therefore required that you have **Grade 8 or 9** in Mathematics at GCSE level. In order to take A Level Further Mathematics you must also be taking A Level Mathematics. It is advised that A Level Further Mathematics is taken as one of four A Level subjects.



What will I study?

Core Pure 1 and 2:

Proof
Complex Numbers
Matrices
Further Calculus
Further Algebra
Polar Coordinates
Differential Equations
Hyperbolic Functions
Further Vectors
Series

Decision:

Graphs and Networks
Algorithms (including Network, Simplex)
Decision Making in Project Management
Graphical Linear Programming
Game Theory

Mechanics:

Dimensional Analysis
Work Energy and Power
Impulse and Momentum
Centre of Mass
Motion in a Circle
Further Dynamics and Kinematics

Further Pure:

Sequences and Series
Number Theory
Groups
Further Vectors
Surfaces
Partial Differentiation
Further Calculus

Contact: Mrs K Naylor or Mrs E Coxon Joint Head of Maths

DIPLOMA IN MEDICAL SCIENCE

<https://www.wjec.co.uk/qualifications/science/vocational/medical-science-level-3>

The WJEC Examination Board offer a Vocational Diploma in Medical Science that is gradually being recognised by more Universities, and is already accepted by Bangor University, Cardiff Met, Chester University and University of West England. Medical Science is offered as an alternative route of study for some students who may not meet the entry requirements for Biology, or for those who want to study a more vocational style course. Medical Science has proven to be popular at King Edward's, and many of our students have gone on to study relevant courses at University.

What will I cover?

Medical Science has a different structure of study as it is a Diploma. There are 6 units in total, each of which have their own grade. To pass the full Diploma, students must pass each component. The different units allow students to learn and develop different skills such as group work, statistical analysis, laboratory skills, research, case studies and carrying out physiological tests.

In Year 12

The three units are:

Unit 1

Human Health and Disease (Written Exam in June)

Unit 2

Physiological Measurements (Coursework)

Unit 3

Medical Science Research Methods (Coursework)

In Year 13

The three units are:

Unit 4

Medicines and Treatment of Disease (Coursework)

Unit 5

clinical Laboratory Techniques
(Coursework - externally assessed)

Unit 6

Medical Case Study (Exam)

Students need to be aware that topics such as Statistics and Biochemistry will be covered in the course, which will be assessed in the final written exams and some coursework pieces.

Entry Requirements

Students are expected to achieve a Grade 5 in two GCSE Science subjects or Combined Science overall grade of a 5-5, from the Higher Tier. We also ask for a Grade 5 (Higher Tier) from both Mathematics and English.

This course offers an alternative curriculum to Biology but is not a replacement.



Contact: Miss A Shaw – Head of Biology

A LEVEL MUSIC

Edexcel: <https://qualifications.pearson.com/en/qualifications/edexcel-a-levels/music-2016.html>

Why study A Level Music?

The A Level Music course is intended to allow students to pursue musical interests and develop a breadth of understanding over a wide range of styles and genres. It provides an excellent basis for lifelong learning and for higher education courses in music. At A Level, students investigate, analyse and evaluate music and its features through a holistic experience of the main musical disciplines of performing, composing, listening and appraising, while developing skills applicable to a wide range of career paths.

How will I be assessed?

- ◆ **A Level Performance** consists of a recital of no less than eight minutes in length, on the candidate's chosen instrument(s), to be performed between March and May of the examination year. Performances may be solo, part of an ensemble, or a combination of the two. The recital is recorded internally and marked externally. This component is worth 30% of the overall marks.
- ◆ **A Level Composition** consists of two composition tasks: one own-choice composition of at least four minutes and one technical composition to a brief set by the exam board, demonstrating technical and contextual understanding of composition skills. A score and sound file are submitted for external marking. This component is worth 30% of the overall marks.
- ◆ The **Listening and Appraising** unit is an examination is worth 40% of the overall marks for the course, based on knowledge and understanding from the six diverse Areas of Study. Candidates are required to demonstrate their musical knowledge and understanding of style and context through the study of set works and related wider listening material covered in each Area of Study.

Prerequisites

- ◆ A Grade 5 or higher at GCSE Music (or equivalent) is advisable, although exceptions may be made where a candidate can demonstrate strong practical skills.
- ◆ A performance standard of at least Grade 5 is recommended on the candidate's chosen instrument(s).
- ◆ ABRSM Grade 5 Theory is desirable and would give a strong foundation to the course. If you do not have that level, we would ask that you work towards securing your music theory knowledge prior to starting the course. Support in this can be made available through extra-curricular provision

What skills will I gain from studying Music?

- ◆ The A Level course provides an opportunity to further develop performance, composition, aural and appraisal skills.
- ◆ Students learn about the stylistic and contextual features of a wide range of music and how to analyse and think critically about music, developing an insight into how composers work.
- ◆ Students will gain important skills in using Music Technology and how it is used within the industry for the creation and presentation of music. The Department is fully equipped with Sibelius and Cubase in the Production Suite and Studio to assist students with this.
- ◆ Students develop as effective, independent learners who can reflect critically and make informed judgements on their own and others' music.

Where can Music lead?

Admission to Universities or Conservatoires of Music; careers in performing; teaching; music management; publishing; studio/live work; composing for film and television.

Universities look favourably on students who have committed to the disciplines of regular practice, extra-curricular involvement and the regimen of self-reflection and improvement; transferable skills which demonstrate positive attributes for further study in any course.

Additional Comment

All A Level Music students are expected to attend an extra-curricular ensemble which supports their main instrument, as well as attending one of the choirs for the development of aural skills. The cost of lessons on the candidate's chosen first instrument are covered by the school, where lessons are taken within school.



What will I study?

Unit 1: Performance (30%)
Recital – 8 minutes (min.)

Unit 2: Composition (30%)
Composition 1: Free Brief
Composition 2: Technical Brief

Unit 3: Listening & Appraising (40%)
Examination: 2 hours 10 minutes

Contact: Mr S Willey – Director of Music



A LEVEL MUSIC TECHNOLOGY

Edexcel AS & A level Music Technology (2017) | Pearson qualifications

Why study Music Technology?

The Music Technology course is designed to be industry-focused and provides students with a range of musical and technological skills that can be applied to a wide range of careers. The course provides students with experience in studio recording, sequencing, synthesis, production, acoustics, the physics behind the music we hear and analysis skills. Students will have access to our production suite, dedicated studio, full band backline and grand piano, a range of microphones and production equipment. Students acquire a full range of skills that they can then use to assist the creation of their own music and forge a professional career in the industry.

How will I be assessed?

- ◆ **Recording:** Students will learn how to capture, mix and master a particular song. Through this process, students will need to appropriately select microphones and a range of hardware to ensure they achieve the best capture of the given song before strengthening their skills in mixing (EQ, compression, effects) to produce a professional mix.
- ◆ **Technology-based composition:** Students will respond to a brief and produce a creative composition. This requires them to use the full range of sequencing, sampling and producing skills they will have acquired through the course, alongside effective approaches to composition and creative use of technology.
- ◆ **Listening and Analysing:** Students will learn about the development of music technology over time and techniques that were typical around certain eras or genres. Students will develop a discerning ear for the recording and production techniques that have been used and use this to influence their own music making. Students sit an exam in which they demonstrate their understanding of these developments, within the context of unfamiliar commercial recordings.
- ◆ **Producing and Analysing:** This practical exam allows students to demonstrate their skills and knowledge of sound theory, editing, mixing and production through a series of practical and written tasks.

Prerequisites

- ◆ The ability to play a musical instrument to a good level is desirable.
- ◆ An interest in production techniques, producing music, equipment and exploring the principles of sound.
- ◆ Good ICT Skills

What skills will I gain from studying Music Technology?

- ◆ The course provides the opportunity to develop skills in sound recording, mixing, production techniques (studio and live) and industry-standard practices.
- ◆ The opportunity to learn how to use industry-standard equipment (using Cubase DAW, digital mixing console and a wide range of equipment) and apply that to their own situation.
- ◆ High levels of technical proficiency that students can then apply to their own creative work, whether that be recording, producing music or generating media related content.
- ◆ Students develop as effective, independent learners who can reflect critically and make informed judgements on their own and others' work.

Where can Music Technology lead?

Admission to Universities or Conservatoires of Music; apprenticeships in the music and events industry; careers in sound engineering live events; teaching; music management; publishing; studio recording and production; radio; theatre; creative and administrative roles in the creative industries and composing for film, computer games, radio and television.

Additional Comment

All students receive a free copy of the basic version of Cubase to allow continued work at home. Students are also encouraged to support extra-curricular and live events at the school as part of the course.



What will I study?

Component 1 (20%)

Recording

NEA, Externally Assessed

Component 2 (20%)

Technology-based composition

NEA, Externally Assessed

Component 3 (25%)

Listening & Analysing

Exam Paper

Component 4 (35%)

Producing and Analysing

Practical Exam

Contact: Mr S Willey – Director of Music

BTEC Level 3 National Extended Certificate in Performing Arts

BTEC Nationals | Performing Arts (2016) | Pearson qualifications

Why Study BTEC Performing Arts?

Firstly, we have achieved immense success with BTEC Level 3 Performing Arts and, not only does this course hope to inspire students to become independent theatre makers with the skills they need to go on to higher education, whether that is to study a course in Performing Arts or another subject, it also prepares students with a variety of transferable skills vital for success in today's society.

Extended Certificate is equivalent to one A Level and carries equivalent UMS points for the grades obtained. It is fully supported by over 150 Universities and Performing Arts Academies and by employers.

How will I be assessed?

You will complete 4 units, two of which are externally assessed.

Unit 1: Investigating Practitioners' Work -

3 hour written Exam - Externally Assessed.

Unit 2: Developing Skills and Techniques for Live Performance -

Performance and Performance Log - Internally assessed.

Unit 3: Group Performance Workshop -

Performance and Performance Log - Externally assessed.

Unit 19: Acting Styles or Unit 27 Musical theatre Techniques

Performance and Performance Log - Internally assessed.

Prerequisites

GCSE Drama or BTEC Performing Arts is beneficial but not essential. *Attendance to lessons is vital.*

This is a group subject and, as such, you will need to work together as a team regardless of personalities, issues or friendships. Attendance and reliability, willingness to experiment and take risks is ESSENTIAL for success.

What skills will I gain from studying BTEC Performing Arts?

Students of BTEC Performing Arts develop skills that are not just essential for drama but applicable to a wide range of higher education subjects and in the workplace. It refines students' collaborative skills, their analytical thinking and their approach to research. Students grow in confidence and maturity as they successfully realise their own ideas. They learn to evaluate objectively and develop a sound appreciation of the influences that cultural and social contexts can have on decision making.

Where can BTEC Performing Arts lead?

Whatever the future holds, students of BTEC Performing Arts emerge with a toolkit of transferable skills preparing them for their next steps whether that be in the Performing Arts sector or in other more mainstream employment such as Business, Management, PR, Health and Social Work. The skills learnt in BTEC Performing Arts underpin just about all other careers and professions. It can be studied at University in its own right or combined with other subjects.

Additional Comment

Universities and Drama Schools recognise the broader employability skills that a Performing Arts education provides a young person with, such as creative thinking, problem solving and teamwork. These qualifications provide an appropriate level of knowledge and skills, to meet the needs of the business and the individual, ensuring employees are appropriately skilled for the job and able to deliver to the standard that the sector expects.

Grading

Distinction* = A*

Distinction = A

Merit = C

Pass = E

What will I study?

Unit 1: Investigating Practitioners' Work. You will study the work of two contrasting Theatre Practitioners and relate their ideas to a theme given by Edexcel. You will also link their ideas to live theatre seen during the course.

Unit 2: Developing Skills and Techniques for Live Performance. You will study and analyse the techniques needed for a good performer. You will take part in a series of workshops preparing you for two different performances. During the process you will keep a Performance Logbook that details and evaluates the journey from rehearsal to performance.

Unit 3: Group Performance Workshop. You will be given five hours over a number of weeks to create a performance in response to a given stimulus set by Edexcel. During this time you will also complete a digital Process Log recording your progress at various stages during the rehearsal period. You will perform to an invited audience. All sessions are completed under controlled conditions.

Unit 19 Acting Styles or Unit 27 Musical Theatre Techniques

You will research into different acting styles and the influence of Theatre Practitioners. You will research and explore at least three different acting styles and apply the knowledge gained in a short performance. You will keep a Performance Log that reviews and evaluates the development and application of acting styles and techniques for a performance.

Contact: Mrs J Plant - Head of Drama Department

A LEVEL PHYSICS

AQA: <http://www.aqa.org.uk/subjects/science/as-and-a-level/physics-7408>

Why study A Level Physics?

It is no exaggeration to say that Physics is the study of everything in the physical world, from the smallest sub-atomic particle to the largest objects in the Universe. If that seems like an exciting prospect and if you enjoy knowledge for its own sake, Physics is definitely for you. We live in an increasingly technological world and Physics is right at the heart of it. Perhaps you are hoping to push forward the boundaries of technology in your future career, or maybe you just want to find out how things work. In either case, Physics is a great choice.

How will I be assessed?

There will be regular assessments of various kinds throughout the course, including formal examinations at the end of Year 12. The official AQA examinations will take place at the end of Year 13 and will cover all the topics studied in Year 12 and Year 13. There is no separate practical test in A Level Physics, but the examinations will include questions about experimental work. You will also be required to achieve a pass in at least twelve key practical activities throughout the course in order to receive the practical endorsement on your Certificate.

Prerequisites

- ◆ GCSE Grade 6 or above in **either** Combined Science or Physics plus a Grade 6 in one other science subject.
- ◆ GCSE Grade 7 or above in Mathematics

What skills will I gain from studying Physics?

- ◆ Problem Solving
- ◆ Communication Skills
- ◆ Practical Skills
- ◆ Mathematical Skills

Where can Physics lead?

To name but a few possible career paths:

- ◆ Engineering
- ◆ Research
- ◆ Astronomy
- ◆ Finance
- ◆ Teaching

The A Level Physics course will equip you for further study or work in a huge range of science and technology fields. It will also make you a better informed citizen in our 21st century society. It is therefore a useful qualification for future lawyers, doctors, architects, journalist and politicians, as well as the more obvious roles listed above.

Additional Comment

As an A Level subject, Physics is as enjoyable as it is challenging. Be prepared to engage your brain, work hard and wrestle with some tricky problems. In return, the rewards for success in A Level Physics are enormous. Physics will open doors for you; its reputation as a demanding course means that employers and educators in all fields will be greatly impressed by an A Level Physics grade on your CV.

What else do I need?

You will need to purchase an A4 hard backed lined Laboratory Book (not spiral bound). These are available from the Physics Department.

What will I study?

Year 12:

- 1 Measurements and their errors
- 2 Particles and Radiation
- 3 Waves
- 4 Mechanics and Materials
- 5 Electricity

Year 13:

- 6 Further Mechanics and Thermal Physics
- 7 Fields and their consequences
- 8 Nuclear Physics

An optional topic eg Engineering Physics

Contact: Mr B Mills – Head of Physics

A LEVEL PHYSICAL EDUCATION

OCR: OCR A Level Physical Education Specification H555

Why study A Level Physical Education?

- ◆ To follow an interest in PE, Leisure and Sport
- ◆ To develop a career path in PE, Leisure and Sport

Prerequisites

- ◆ 5 GCSEs at Grade 5 to 8. If you study GCSE PE, you need to be achieving at least Grade 6 on the theory paper
- ◆ An interest in PE and Sport and the Human Body
- ◆ Ability in at least one sport is essential

How will I be assessed?

You will be assessed in two ways:

- ◆ 70% by written examinations (3)
- ◆ 15% by practical assessment (1)
- ◆ 15% by coursework (1)

Component 1

Physiological Factors affecting Performance

- ◆ Anatomy and Physiology
- ◆ Exercise Physiology
- ◆ Biomechanics

Component 2

Psychological Factors affecting Performance

- ◆ Skill Acquisition
- ◆ Sports Psychology

Component 3

Socio-Cultural and Contemporary Issues

- ◆ Sport, Society and Technological Influences

Component 4

Performance within Physical Education

- ◆ Performance or Coaching Practical
- ◆ Evaluation of Performance

What skills will I gain from studying Physical Education?

- ◆ Knowledge and understanding of the human body, Sport Psychology, Technology in Sport, Social Issues and History of Sport
- ◆ Social Skills
- ◆ Logical Thinking Skills
- ◆ Skills of Analysis

Where can Physical Education lead?

- ◆ Teaching and Lecturing
- ◆ The growing Leisure Industry
- ◆ Physiotherapy
- ◆ Sport Management
- ◆ Sports Coaching and Development
- ◆ Research in Sport Science

Additional Comment

I would advise you to talk to students in Year 12 and Year 13 about their experiences of A Level Physical Education.



What will I study?

Anatomy and Physiology
Exercise Physiology
Biomechanics
Skill Acquisition
Sports Psychology
Sport, Society and Technological Influence in Sport

You will also complete an Analysis of Performance in your sport; prepare a Training Programme to improve an identified area of weakness.

Contact: Mrs N Coombes - Head of PE

BTEC NATIONAL CERTIFICATE IN SPORT

EDEXCEL: <https://qualifications.pearson.com/en/qualifications/btec-nationals/sport-and-exercise-science-2016.html>

BTEC Sport and Exercise Science Level 3 (2016) NQF

Why study BTEC Sport?

- ◆ An alternative to A Level PE
- ◆ 5 out of 8 units are course work
- ◆ BTEC explores different aspects of PE and Sport
- ◆ Equivalent of two A Levels

How will I be assessed?

By written assignments, presentations and practical assessments only; three examinations and five coursework units.

Prerequisites

- ◆ An interest in PE/Sport
- ◆ GCSE PE desirable but not essential
- ◆ English and Mathematics GCSE Grade 4 or above

What skills will I gain from studying BTEC Sport?

- ◆ Teaching and Coaching Skills
- ◆ Skills of Analysis of Data
- ◆ Social Skills
- ◆ A deeper understanding of current issues on Sport
- ◆ Report Writing
- ◆ Leadership Skills

Where can BTEC Sport lead?

- ◆ Teaching / Coaching
- ◆ Leisure Centre Management
- ◆ Sport / Media / Commercialism Work
- ◆ Working for NGB of Sport

Additional Comment

- ◆ Think long and hard about your route if you are considering BTEC
- ◆ BTEC suits some people more than others
- ◆ This course requires a commitment to teaching and coaching in addition to lessons

Pearson
BTEC Level 3 National
Extended Diploma in
Sport and Exercise
Science



What will I study?

Year 12

Unit 1: Sport and Exercise Physiology
Unit 2: Functional Anatomy
Unit 3: Applied Sport and Exercise Psychology
Unit 5: Applied Research Methods in Sport and Exercise Science

Year 13

Unit 4: Field and Laboratory-based Fitness Testing
Unit 6: Coaching for Performance and Fitness
Unit 8: Specialised Fitness Training
Unit 9: Research Project

Contact: Mr A Haigh – Lead Teacher for BTEC Sport

A LEVEL PSYCHOLOGY

AQA: <http://www.aqa.org.uk/subjects/psychology/as-and-a-level>

Why study Psychology?

The study of Psychology will allow you to develop a deeper understanding of people as it is the scientific study of mind and behaviour. Psychology covers a range of subjects from the importance of attachment in infancy to memory and how psychologists use research to help police in their ability to interview eye witnesses, a range of psychological disorders and offender profiling and dealing with offending behaviour. It is a subject that can be applied to all aspects of life.

How will I be assessed?

There will be three examinations, each two hours long at the end of the course. They will include multiple choice, short answer and extended answer questions, testing understanding and written expression. At least 10% of the A Level marks will require mathematical skills at least at higher tier GCSE level.

Prerequisites

Psychology is a scientific discipline, so two Grade 6s in Science at GCSE is expected (Biology being the most relevant science). Statistics and other mathematical skills are an integral part of Psychology, so a minimum Grade 5 in Maths GCSE should be achieved. Also a Grade 5 in English at GCSE is expected as good written communication skills are required for extended writing questions.

What skills will I gain from studying Psychology?

You will acquire transferable skills such as the ability to write effectively at length, apply knowledge, analyse data, and evaluate theories and research. You will become familiar with the rigour of the scientific process and statistical analysis.

Where can Psychology lead?

A Level Psychology is very good preparation for academic work. As the focus is on developing an understanding of people, it equips students for careers in a variety of occupations. Occupations include various careers in Psychology, Research, Teaching, Medicine, the Police, Counselling, Business etc.

Additional Comment

Psychology combines well with many other subjects including Sociology, Biology, Chemistry, Mathematics and Philosophy and Ethics both at A Level and degree level.

Sensitive Content

Students taking Psychology should be aware of the sensitive nature of some of the content. We cover topics such as depression, schizophrenia, memory loss, attachment, bereavement, crime and imprisonment. This content is compulsory, so students need to know that they will be required to study these issues.

What will I study?

A Level Course Content

Paper 1: Introductory Topics in Psychology

- Social Influence
- Memory
- Attachment
- Psychopathology

Paper 2: Psychology in Context

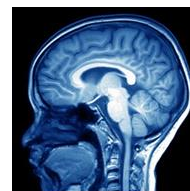
- Approaches in Psychology
- Biopsychology
- Research Methods

Paper 3: Issues and Options in Psychology

- Issues and Debates in Psychology
- Relationships
- Schizophrenia
- Forensic Psychology



Contact: Mrs J Cottier-Cooper
Head of Social Science



A LEVEL RELIGIOUS STUDIES

OCR: <http://www.ocr.org.uk/qualifications/as-a-level-gce-religious-studies-h173-h573-from-2016/>

Why study A Level Religious Studies?

- ◆ It can be fun, challenging and stimulating
- ◆ Follows mainstream scholarship in Ethics, Theology and Philosophy
- ◆ Valuable qualification for anyone going on to Further Education
- ◆ Gives an acquaintance with the history of ideas – valued by universities and employers
- ◆ You confront *real* issues and make informed responses eg sexual ethics, euthanasia etc

How will I be assessed?

There will be three exam papers at the end of the two-year course. Each paper will be two hours long where students will answer three questions from a choice of four.

Prerequisites

- ◆ You do *not* have to have a personal faith or religious conviction in order to study Religious Studies at examination level
- ◆ You do *not* have to have studied Religious Studies at GCSE in order to be successful in it at A Level
- ◆ A Grade 6 in either Religious Studies or English is required at GCSE

What skills will I gain from studying Philosophy and Applied Ethics (Religious Studies)?

- ◆ The ability to think rationally and engage in rational debate – universities and employers value this
- ◆ Enhances self-understanding and sensitivity to the needs of others
- ◆ Analysis of lines of argument, weighing up the validity of arguments and ideas in context and reaching reasoned conclusions
- ◆ Development of a critical line of argument
- ◆ Discussion and presentation skills
- ◆ Thinking outside the box!

Where can Philosophy and Applied Ethics (Religious Studies) lead?

Anywhere! To a wide range of university courses and jobs – where *people* and/or ideas are at the heart . . . eg Medicine, Law, Hotel Management, Philosophy, Business, Journalism, International Development etc.

“Studying Philosophy helps me to refine my ideas. Thinking clearly and putting my views across well is important . . . it teaches you important skills.”

“Religious Studies encourages me to think about important matters and questions that affect people . . .”

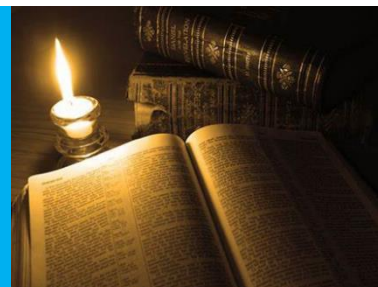
“As a TV news reporter, I travel to many different parts of the world. Knowing about religion and ethical dilemmas helps me to understand important issues and problems.”



What will I study?

A Level – H573

- Unit 1: Philosophy of Religion
- Unit 2: Religion and Ethics
- Unit 3: Development in Christian Thinking (DCT)



Contact: Mr R Garner – Head of Religious Studies

A LEVEL SOCIOLOGY

AQA: <http://www.aqa.org.uk/subjects/sociology/as-and-a-level>

Why study A Level Sociology?

The study of Sociology will allow you to develop a deep understanding of Contemporary British Society and how society has changed over time, together with the factors that have contributed to these changes. An example of this would be the family and how this has changed from a traditional model to a more diverse range of family types.

How will I be assessed?

There will be three examinations, each two hours long at the end of the course. They will include short answer and extended answer questions testing understanding, application and evaluation. There is no coursework in this subject.

Prerequisites

Students need not have studied Sociology but must have acknowledged academic ability, so a Grade 5 in English is expected. Many students without previous experience of the subject have obtained excellent A Level grades. Good written communication skills, including essay writing, are essential.



What skills will I gain from studying Sociology?

Your essay writing, analysis and evaluative skills will be honed, as will the ability to apply theories and evidence to social concepts and issues.

Where can Sociology lead?

From a survey carried out on a small scale, the following areas of employment all preferred A Level Sociology from recruits: British Airways, BBC, Sainsbury's, Nursing, Occupational Therapy, Police work. Previous students who have kept in touch with the department are employed in a variety of occupations: Doctors, Barristers, Solicitors, Psychologists, Teaching, Accountants, Commerce, University Lecturers, Banking, Armed Forces, Nursing, Communications and Media, Physiotherapists and Business.

Additional Comment

The subject has an excellent examination record in the school and a reputation for hard work in an enjoyable, amiable atmosphere. This subject combines very well with others such as Psychology, Health and Social Care, History and Geography.

Sensitive Content

Students taking Sociology should be aware of the sensitive nature of some of the content. We cover topics such as divorce, death, discrimination, crime and imprisonment. This content is compulsory, so students need to know that they will be required to study these issues.

What will I study?

A Level Course Content

Unit 1: Education with Theory & Methods

- Education
- Methods in Context
- Sociological Theory and Methods

Unit 2: Topics in Sociology

- Families and Households
- Beliefs in Society

Unit 3: Crime & Deviance with Theory & Methods

- Crime and Deviance
- Research Methods

Contact: Mrs J Cottier-Cooper – Head of Social Science

CORE MATHEMATICAL STUDIES

AQA Level 3 Mathematical Studies

<https://aqa.org.uk/subjects/mathematics/aqa-certificate/mathematical-studies-1350>

Why study Core Mathematics?

Studying Core Mathematical Studies helps students develop their quantitative and problem-solving skills. This is valuable preparation for the quantitative skills they will need for many degree courses, particularly subjects such as psychology, geography, business-related courses, sports and social sciences, and natural science courses that do not require AS/A Mathematics.

Many universities highly value Core Maths and its applications to other subjects. Students have the opportunity to learn about many areas of 'useful' Maths, from estimating answers to wide-reaching questions and how to calculate how much income tax they need to pay each month.

This is a qualification designed for students who have achieved a Grade 5 or above at GCSE Mathematics and wish to continue with an element of Mathematics in the Sixth Form.

How will I be taught / assessed?

Students will be taught for two hours a week for two years. Core Maths is assessed purely by examination with two papers being taken at the end of Year 13, each 90 minutes long.

Prerequisites

Students will be expected to have at least a Grade 5 in Mathematics and a good understanding and enjoyment of Mathematics.

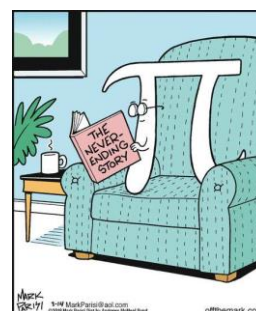
It is *essential* that Core Maths is taken as a fourth option to support three full A Levels.

What is it worth?

UCAS Points will be awarded as follows:

(Approximately half an A Level)

A	20
B	16
C	12
D	10
E	6



What will I study?

Analysis of Data
Maths for Personal Finance
Estimation
Critical analysis of Data Models
Probability
Normal Distribution

Contact: Mrs K Naylor or Mrs E Coxon Joint Head of Maths

YOUNG ENTERPRISE COMPANY PROGRAMME



“We believe that young people should be given the best chance for a rewarding future in work and life – no matter where they start

King Edward VI School has a proud record in participating in the Young Enterprise Company Programme. The programme is designed for young people to develop key life and employability skills by setting up and running their own company with guidance from a business advisor and teacher.

Students will compete against other teams from other Staffordshire schools, with the winners going to a West Midlands final and then a UK final. **In 2020 ‘EnviroTent’ from King Edward VI – Lichfield, The UK winners went on to represent the UK in the virtual European final in Portugal!**

Applicants, to be successful, need to demonstrate strong commitment both inside and outside of school, team work, presentation, time management and communication skills. The programme is designed to improve these skills as well as helping students to gain confidence.

The Young Enterprise programme is suitable for anyone as a wide range of skill sets are required, as they are in the world of business, though Business, Economics and Accounting are especially relevant subjects.

Those completing the Young Enterprise programme have found the experience invaluable and have gained university sponsored degree courses and internships as a result of taking part.



Members of the Keye Safety Company even presented at a reception at 11 Downing Street in October 2017.

EnviroTent – 2020 UK WINNERS!

How many people can put that on their CV?

Overall there will be ‘ups’ and ‘downs’ throughout the process but without doubt it is fun and hopefully students can even make a profit by taking part!



Keye Safety with their product the ‘At Risk Disk’ at the UK Final held in London with their YE 2015 UK Best Presentation Award and Second Runners Up Award in the UK 2015

Contact: Mr N Turner – Link Teacher Young Enterprise



The Big Board Company Winners (2012) of the Goldman Sachs Innovation Award presenting in London

PERSONAL DEVELOPMENT PROGRAMME

As part of the Sixth Form Curriculum,
every student has a Personal Development Programme.
This provides a range of opportunities to extend and broaden
students' skills in a range of contexts.

For both employment and higher education,
students require skills which extend beyond the classroom
and their chosen specialism.

This is an enrichment opportunity designed to build upon extra-curricular activities which many students will already be doing or choose to take up as part of their own personal development.

Students design their own programme to explore their interests and develop their skills. The opportunities to extend workplace skills; working with young people as a mentor or coach; community placements; extended involvement in sport, music or art are just some of the possibilities. For many students, this is an excellent opportunity to build on work experience or volunteering to enhance their Post 18 application.

Tutor Periods, Assemblies and Registration

Students will also continue to follow a varied PSHE Programme during the Sixth Form. PSHE sessions focus on developing independent learning skills as well as exploring topics such as current affairs and careers. Our annual Post 18 Options event supports students to explore their opportunities for post 18 work and study.

Re-Sit for Mathematics and English Language

For students who wish to improve their achievement in these subjects, support is available to cover aspects of the syllabus again and retake the examinations. Every student is encouraged to ensure that they have a Level 2 qualification in both Mathematics and English and students are expected to take this option where necessary.



**Contact: Miss J Williamson, Achievement Leader Year 12 and Year 13
Or Mr A Haigh, Assistant Achievement Leader Year 12 and Year 13**

Raising the Participation Age (RPA)

The Government is increasing the age to which all young people in England must continue in education or training, requiring them to continue until their eighteenth birthday from 2015.

Raising the participation age (RPA) does not mean young people must stay in school; they will be able to choose one of the following options post-16.

- ◆ Full-time education, such as school, college or home education
- ◆ An apprenticeship
- ◆ Part-time education or training if they are employed, self-employed or volunteering full-time (which is defined as twenty hours or more a week).

We aim to ensure that all our students have a secure place in the Sixth Form, at college or in an apprenticeship once they complete Year 11. Students should be aiming to complete a two-year programme in the Sixth Form. However, where a transition is necessary at the end of Year 12, we will support students in their decisions.

Financial Considerations

Sixth Form education is considered a transitional stage between compulsory pre-16 education and higher education. It is the student's own responsibility to provide writing materials and file paper. Whilst necessary text books can usually be supplied on loan, students will be encouraged to buy their own books to supplement them. A small number of subjects (eg Geography) offer field work opportunities, while exchange visits may be offered by others. In each of these cases the parent will be asked for a contribution to offset the cost.

Upon leaving school the student is subject to national regulations covering the payment of approved fees and maintenance for university study. Information about student loans can be supplied upon request.

Modular external examinations will allow re-sit opportunities. It is school policy that the first examination entry fee for a module is paid by the school. Subsequent entries are paid by the student.

16 – 19 Bursary Fund

The Government has withdrawn the Educational Maintenance Allowance and replaced it with a more limited 16 – 19 Bursary Fund. The fund is made available from the Government through its funding body, Young People's Leaving Agency (YPLA) for 16 - 18 year olds, to provide assistance to students whose access to, or completion of, education is inhibited by financial constraints or barriers. Students can apply to access money from this fund at the start of the academic year by collecting an application form from the Head of Sixth Form.

A Level Results 2023

Subject	Entries	A*	A	B	C	D	E	U	A*-A	A*-B	A*-C	A*-E
Accounting/Finance	10	0	0	2	3	4	1	0	0.0%	20.0%	50.0%	100.0%
Biology	52	1	11	8	8	14	5	5	23.1%	38.5%	53.8%	90.4%
Business Studies	34	0	3	5	13	9	4	0	8.8%	23.5%	61.8%	100.0%
Chemistry	32	1	5	8	5	4	7	2	18.8%	43.8%	59.4%	93.8%
Computer Studies/Computing	3	0	0	1	1	1	0	0	0.0%	33.3%	66.7%	100.0%
D&T Product Design	8	0	0	1	5	1	0	1	0.0%	12.5%	75.0%	87.5%
Economics	27	2	6	8	9	2	0	0	29.6%	59.3%	92.6%	100.0%
English Language	18	0	1	10	5	2	0	0	5.6%	61.1%	88.9%	100.0%
English Literature	12	0	0	4	6	1	1	0	0.0%	33.3%	83.3%	100.0%
Fine Art	20	4	6	6	3	1	0	0	50.0%	80.0%	95.0%	100.0%
French	5	0	0	1	3	1	0	0	0.0%	20.0%	80.0%	100.0%
Geography	30	0	4	10	8	6	2	0	13.3%	46.7%	73.3%	100.0%
History	14	0	2	5	5	1	1	0	14.3%	50.0%	85.7%	100.0%
Mathematics Further	8	5	1	0	0	2	0	0	75.0%	75.0%	75.0%	100.0%
Mathematics	45	5	12	10	10	5	2	1	37.8%	60.0%	82.2%	97.8%
Medical Science	7	0	3	2	2	0	0	0	42.9%	71.4%	100.0%	100.0%
Music Technology	6	0	0	1	2	1	2	0	0.0%	16.7%	50.0%	100.0%
Music	5	0	0	2	2	0	1	0	0.0%	40.0%	80.0%	100.0%
Physics	23	1	4	8	2	5	2	1	21.7%	56.5%	65.2%	95.7%
Psychology	61	1	5	15	14	15	10	1	9.8%	34.4%	57.4%	98.4%
Religious Studies	16	0	3	3	7	0	3	0	18.8%	37.5%	81.3%	100.0%
Sociology	56	2	7	14	20	7	3	3	16.1%	41.1%	76.8%	94.6%
Sport/PE Studies	16	0	2	5	7	2	0	0	12.5%	43.8%	87.5%	100.0%
	508	22	75	129	140	84	44	14	19.1%	44.5%	72.0%	97.2%
		4.3%	19.1%	44.5%	72.0%	88.6%	97.2%	100%				
Level 3 Core Maths	17	0	4	5	3	2	3	0	23.5%	52.9%	70.6%	100.0%
			D*	D	M	P			D*	D*-D	D*-M	D*-P
Health & Social Care BTEC double	20		4	10	6	0			20.0%	70.0%	100.0%	100.0%
Health & Social Care BTEC single	4		2	2	0	0			50.0%	100.0%	100.0%	100.0%
Performing Arts	9		3	5	1	0			33.3%	88.9%	100.0%	100.0%
IT Nationals	11		2	7	2	0			18.2%	81.8%	100.0%	100.0%
Sport BTEC (Double)	14		9	2	3	0			64.3%	78.6%	100.0%	100.0%
	58		20	26	12	0						
			34.5%	79.3%	100%	100%						

University Destination of School Leavers 2023

University	Course
Aberystwyth University	Business and Management
Anglia Ruskin University	Paramedic Science
Arts University Bournemouth	Fine Art
Aston University, Birmingham	Sociology
Aston University, Birmingham	Psychology (4 year sandwich)
Aston University, Birmingham	Business and Management
Aston University, Birmingham	Mechanical Engineering
Aston University, Birmingham	Computer Science
Aston University, Birmingham	Cyber Security
Aston University, Birmingham	Product Design and Technology
Aston University, Birmingham	Business Computing and IT
Aston University, Birmingham	Sociology
Bangor University	Environmental Science
Bangor University	Modern Languages and History
Bangor University	Marine Biology
Bangor University	Zoology (with Foundation Year)
Bangor University	Environmental Science
Bangor University	Modern Languages and History
Bath Spa University	Criminology and Psychology
BIMM University	Electronic Music Production
BIMM University	Music and Sound Production
Birmingham City University	Fashion Business and Promotion
Birmingham City University	Marketing with Advertising and Public Relations
Birmingham City University	Psychology with a Foundation Year
Birmingham City University	Sound Engineering and Production with a Foundation Year
Birmingham City University	Fine Art
Birmingham City University	Fine Art
Bristol, University of the West of England	Geography
Bristol, University of the West of England	Architectural Technology and Design
Cardiff Metropolitan University	Sport Conditioning, Rehabilitation and Massage
Cardiff Metropolitan University	Accounting and Economics (3 years or 4 years with Foundation)
Cardiff Metropolitan University	Sport Conditioning, Rehabilitation and Massage
Cardiff Metropolitan University	Primary Education Studies
Cardiff University	English Language and Linguistics
Cardiff University	Urban Planning and Development with a Professional Placement Year
Cardiff University	Accounting with a Professional Placement Year
Cardiff University	Business Management with a Professional Placement Year
Cardiff University	Midwifery
Cardiff University	Urban Planning and Development with a Professional Placement Year
Cardiff University	Business Management with a Professional Placement Year
College of Esports	International Esports Business & Events Management (with Foundation Year)
Coventry University	Psychology
Coventry University	Civil Engineering

Coventry University	Fine Art
Keele University	Geography with Foundation Year
Keele University	Business and Human Resource Management with Foundation Year
Lancaster University	Accounting and Finance (Industry)
Lancaster University	Social Work
Leeds Beckett University	Applied Sports Studies in Cricket
Leeds Beckett University	Sport and Exercise Science
Liverpool John Moores University	Criminal Justice with Foundation Year
Liverpool John Moores University	Primary Education with Qualified Teacher Status (QTS)
Liverpool John Moores University	Professional Policing
Liverpool John Moores University	International Relations and Politics
Liverpool John Moores University	Sport and Exercise Science
Liverpool John Moores University	Professional Policing
Loughborough University	Psychology (with placement year)
Loughborough University	Aeronautical Engineering (with placement year)
Loughborough University	Engineering Physics (with placement year)
Loughborough University	Sports Technology
Manchester Metropolitan University	Geography with Foundation Year
Manchester Metropolitan University	Digital Media and Communications
Manchester Metropolitan University	Fashion Business and Management
Manchester Metropolitan University	Economics
Manchester Metropolitan University	Psychology
Manchester Metropolitan University	Banking and Finance (Foundation Year)
Manchester Metropolitan University	Economics
Middlesex University	BSc Information Technology
Newcastle University	Pharmacy
Newcastle University	Sport and Exercise Science
Newcastle University	Economics
Newcastle University	Law
Newcastle University	Law
Nottingham Trent University	English Language and Linguistics
Nottingham Trent University	Psychology (Mental Health)
Nottingham Trent University	Mechanical Engineering
Nottingham Trent University	Architectural Technology
Nottingham Trent University	Sport and Exercise Science
Nottingham Trent University	Law with Criminology
Nottingham Trent University	Accounting and Finance
Oxford Brookes University	Construction Project Management
Royal Veterinary College, University of London	Veterinary Medicine
Sheffield Hallam University	History
Staffordshire University	Working with Children, Young People and Families
Swansea University	Chemistry with a Foundation Year
Swansea University	Law
Swansea University	Law
The University of Edinburgh	Medical Sciences
The University of Edinburgh	Medicine
UCL (University College London)	Medicine (6 years)



University of Bath	Mechanical Engineering
University of Bath	Civil Engineering with professional placement
University of Birmingham	Mathematics
University of Birmingham	Mathematics
University of Birmingham	Mathematics
University of Birmingham	Law
University of Birmingham	Business Management
University of Birmingham	Psychology
University of Birmingham	Biochemistry, Medical
University of Birmingham	Sport, Physical Education and Coaching Science
University of Birmingham	Mathematics
University of Birmingham	Biological Sciences
University of Brighton	Sociology
University of Central Lancashire	Live Audio Engineering and Music Production
University of Chester	Mathematics
University of Chester	Philosophy, Ethics and Religion
University of Chester	Mathematics
University of Derby	Education Studies with Foundation Year
University of Derby	Business Management
University of Derby	Psychology with Foundation Year
University of Derby	Business Management
University of Exeter	Zoology
University of Hertfordshire	Automotive Engineering with Motorsport
University of Hertfordshire	Automotive Engineering with Motorsport
University of Kent	Architecture
University of Kent	Architecture
University of Leeds	Civil Engineering
University of Leeds	Art and Design
University of Liverpool	Veterinary Science
University of Liverpool	Geography
University of Liverpool	Computer Science (with a Year in Industry)
University of Liverpool	Psychology
University of Manchester	Mathematics
University of Manchester	History and French
University of Northampton	Sport Rehabilitation and Conditioning
University of Nottingham	Politics and Economics
University of Plymouth	Marine Biology and Coastal Ecology
University of Salford	Games Design and Production
University of Sheffield	Aerospace Engineering with a Foundation Year
University of Southampton	Philosophy and Sociology
University of Southampton	Biology
University of Southampton	Marine Biology with Oceanography
University of the Arts London	Fashion Marketing
University of Warwick	Mathematics, Operational Research, Statistics, Economics (MORSE)
University of Westminster, London	Economics
University of Worcester	Early Childhood in Society (Graduate Practitioner)
York St John University	Biomedical Science
York St John University	Psychology

In addition to the students studying at University, other destinations included:

- ◆ Apprenticeships in Marketing, Estate Agency, Pilot, Land Management and Musical Technology
- ◆ Employment across several industries
- ◆ Continuing Education

	2023	2022	2021	2020	2019	2018
University UK (Russell Group)	70% (30%)	79% (27%)	79% (37%)	71% (42%)	75% (23%)	77% (19%)
Gap Year and then University	12%	10%	10%	13%	9%	8%
Further Education	3%	0%	2%	1%	2%	3%
Employment / Apprenticeship	15%	10%	8%	14%	13%	11%
University Abroad	-	-	-	1%	-	-
Services	-	1%	2%	-	1%	1%





KING EDWARD VI
SCHOOL LICHFIELD